

## Product datasheet for **TA324993S**

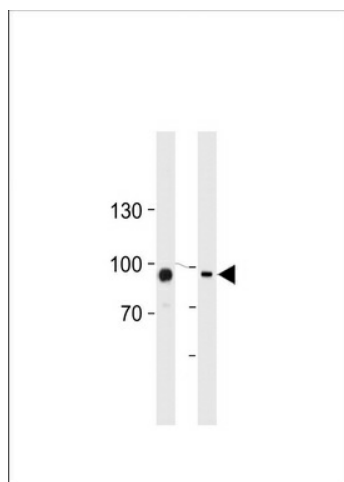
### Transglutaminase 2 (TGM2) Rabbit Polyclonal Antibody

#### Product data:

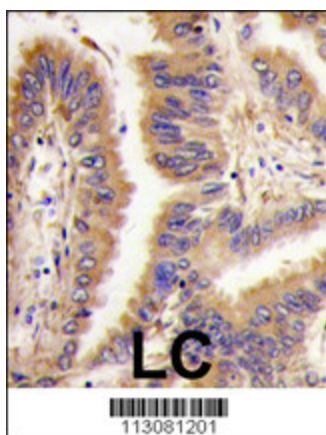
Product Type:	Primary Antibodies
Applications:	IF, IHC, WB
Recommended Dilution:	WB: 1:1000, IF: 1:10~50, IHC: 1:10~50
Reactivity:	Human
Host:	Rabbit
Isotype:	IgG
Clonality:	Polyclonal
Immunogen:	This Transglutaminase (TGM2) antibody is generated from rabbits immunized with a KLH conjugated synthetic peptide between 429-458 amino acids from the Central region of human Transglutaminase (TGM2).
Formulation:	Purified polyclonal antibody supplied in PBS with 0.09% (W/V) sodium azide.
Concentration:	lot specific
Purification:	This antibody is prepared by Saturated Ammonium Sulfate (SAS) precipitation followed by dialysis against PBS.
Conjugation:	Unconjugated
Storage:	Store at -20°C as received.
Stability:	Stable for 12 months from date of receipt.
Predicted Protein Size:	77329 Da
Gene Name:	transglutaminase 2
Database Link:	<a href="#">NP_004604</a> <a href="#">Entrez Gene 7052 Human</a> <a href="#">P21980</a>
Synonyms:	G-ALPHA-h; GNAH; HEL-S-45; TG2; TGC
Protein Families:	Druggable Genome
Protein Pathways:	Huntington's disease

[View online »](#)

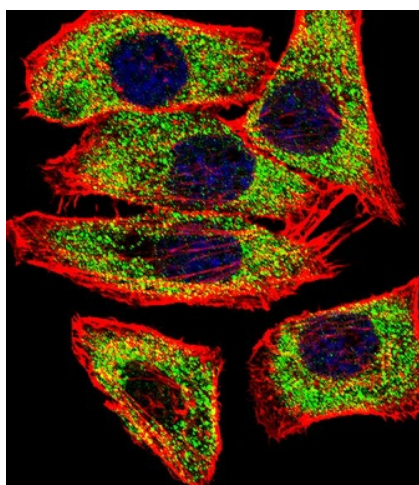
## Product images:



TGM2 Antibody (Center K444) (Cat. #TA324993) western blot analysis in HUVEC, K562 cell line lysates (35ug/lane). This demonstrates the TGM2 antibody detected the TGM2 protein (arrow).



Formalin-fixed and paraffin-embedded human lung carcinoma tissue reacted with \*TGM2 antibody (Center K444), which was peroxidase-conjugated to the secondary antibody, followed by DAB staining. This data demonstrates the use of this antibody for immunohistochemistry; clinical relevance has not been evaluated.



IF image of U251 cell stained with TGM2 Antibody (Center K444) (Cat#TA324993). U251 cells were incubated with TGM2 primary antibody (1:25, 1 h at 37°C). For secondary antibody, Alexa Fluor® 488 conjugated donkey anti-rabbit antibody (green) was used (1:400). Cytoplasmic actin was counterstained with Alexa Fluor® 555 (red) conjugated Phalloidin (7 units/ml). Nuclei were counterstained with DAPI (blue). TGM2 immunoreactivity is localized to Cytoplasm significantly.