

## Product datasheet for **TA324990S**

### PGP9.5 (UCHL1) Mouse Monoclonal Antibody [Clone ID: 696CT2.1.4]

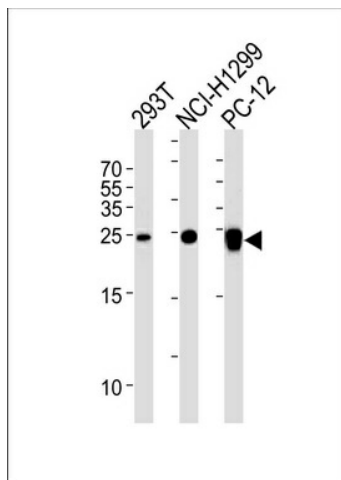
#### Product data:

Product Type:	Primary Antibodies
Clone Name:	696CT2.1.4
Applications:	WB
Recommended Dilution:	WB: 1:1000
Reactivity:	Human, Rat (Predicted: Mouse, Bovine, Pig, Monkey)
Host:	Mouse
Isotype:	IgG1
Clonality:	Monoclonal
Immunogen:	This UCHL1 Monoclonal antibody is generated from mice immunized with a KLH conjugated synthetic peptide selected from the 185-214 region of human UCHL1.
Formulation:	Purified monoclonal antibody supplied in PBS with 0.09% (W/V) sodium azide.
Concentration:	lot specific
Purification:	This antibody is purified through a protein G column, followed by dialysis against PBS.
Conjugation:	Unconjugated
Storage:	Store at -20°C as received.
Stability:	Stable for 12 months from date of receipt.
Predicted Protein Size:	24824 Da
Gene Name:	ubiquitin C-terminal hydrolase L1
Database Link:	<a href="#">NP_004172</a> <a href="#">Entrez Gene 22223 Mouse</a> <a href="#">Entrez Gene 29545 Rat</a> <a href="#">Entrez Gene 701579 Monkey</a> <a href="#">Entrez Gene 7345 Human</a> <a href="#">P09936</a>
Synonyms:	HEL-117; NDGOA; PARK5; PGP 9.5; PGP9.5; PGP95; Uch-L1
Protein Families:	Druggable Genome, Protease
Protein Pathways:	Parkinson's disease



[View online »](#)

## Product images:



UCLH1 Antibody (C-term) (Cat. #[TA324990])  
western blot analysis in 293T, NCI-H1299, rat PC-12 cell line lysates (35ug/lane). This demonstrates the UCLH1 antibody detected the UCLH1 protein (arrow).