

Product datasheet for **TA324989S**

Cytochrome P450 3A5 (CYP3A5) Rabbit Polyclonal Antibody

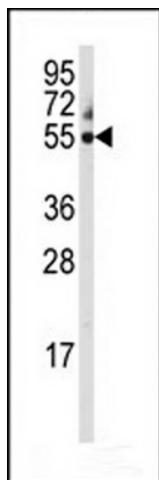
Product data:

Product Type:	Primary Antibodies
Applications:	IF, IHC, WB
Recommended Dilution:	WB: 1:1000, IHC: 1:10~50, IF: 1:10~50
Reactivity:	Human
Host:	Rabbit
Isotype:	IgG
Clonality:	Polyclonal
Immunogen:	This CYP3A5 antibody is generated from rabbits immunized with a KLH conjugated synthetic peptide between 476-502 amino acids from the C-terminal region of human CYP3A5.
Formulation:	Purified polyclonal antibody supplied in PBS with 0.09% (W/V) sodium azide.
Concentration:	lot specific
Purification:	This antibody is prepared by Saturated Ammonium Sulfate (SAS) precipitation followed by dialysis against PBS.
Conjugation:	Unconjugated
Storage:	Store at -20°C as received.
Stability:	Stable for 12 months from date of receipt.
Predicted Protein Size:	57109 Da
Gene Name:	cytochrome P450 family 3 subfamily A member 5
Database Link:	NP_000768 Entrez Gene 1577 Human P20815
Synonyms:	CP35; CYP11A5; P450PCN3; PCN3
Protein Families:	Druggable Genome, P450, Transmembrane
Protein Pathways:	Drug metabolism - cytochrome P450, Drug metabolism - other enzymes, Linoleic acid metabolism, Metabolic pathways, Metabolism of xenobiotics by cytochrome P450, Retinol metabolism

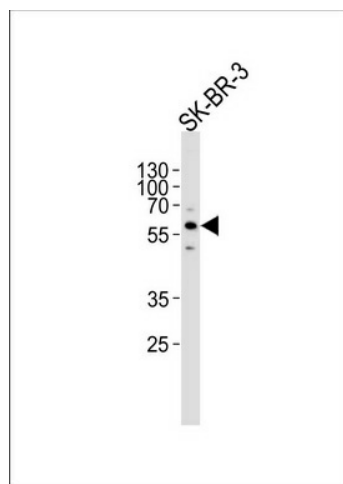


[View online »](#)

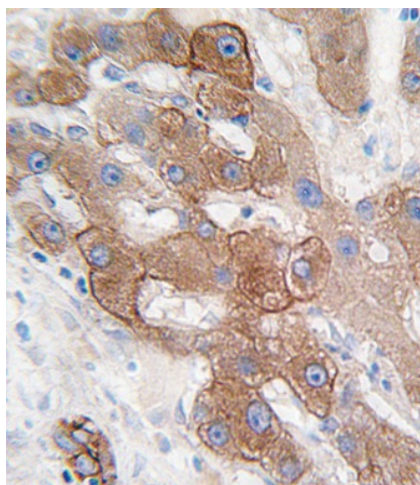
Product images:



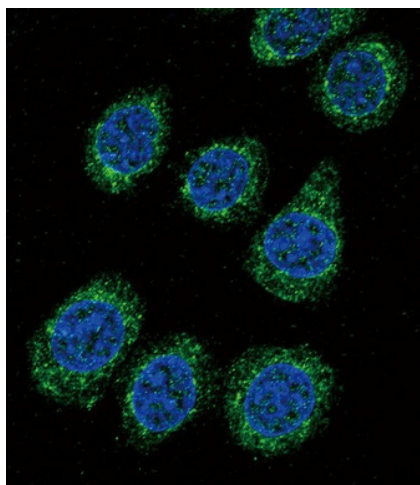
Western blot analysis of anti-CYP3A5 Antibody (C-term) (Cat.#[TA324989]) in 293 cell line lysates (35ug/lane). CYP3A5 (arrow) was detected using the purified Pab.



Western blot analysis of lysate from SK-BR-3 cell line, using CYP3A5 Antibody (C-term) (Cat. # [TA324989]). [TA324989] was diluted at 1:1000. A goat anti-rabbit IgG H&L (HRP) at 1:5000 dilution was used as the secondary antibody. Lysate at 35ug.



Formalin-fixed and paraffin-embedded human hepatocarcinoma tissue reacted with CYP3A5 antibody (C-term), which was peroxidase-conjugated to the secondary antibody, followed by DAB staining. This data demonstrates the use of this antibody for immunohistochemistry; clinical relevance has not been evaluated.



Confocal immunofluorescent analysis of CYP3A5 Antibody (C-term) (Cat#[TA324989]) with 293 cell followed by Alexa Fluor 488-conjugated goat anti-rabbit IgG (green). DAPI was used to stain the cell nuclear (blue).