

## Product datasheet for **TA324988S**

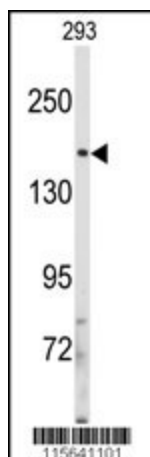
### IRS2 Rabbit Polyclonal Antibody

#### Product data:

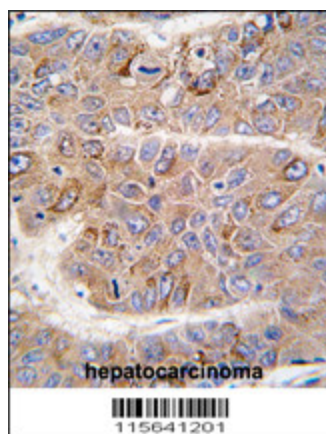
Product Type:	Primary Antibodies
Applications:	IF, IHC, WB
Recommended Dilution:	IF: 1:10~50, WB: 1:1000, IHC: 1:50~100
Reactivity:	Human
Host:	Rabbit
Isotype:	IgG
Clonality:	Polyclonal
Immunogen:	This IRS2 antibody is generated from rabbits immunized with a KLH conjugated synthetic peptide between 1309-1338 amino acids from the C-terminal region of human IRS2.
Formulation:	Purified polyclonal antibody supplied in PBS with 0.09% (W/V) sodium azide.
Concentration:	lot specific
Purification:	This antibody is prepared by Saturated Ammonium Sulfate (SAS) precipitation followed by dialysis against PBS.
Conjugation:	Unconjugated
Storage:	Store at -20°C as received.
Stability:	Stable for 12 months from date of receipt.
Predicted Protein Size:	137334 Da
Gene Name:	insulin receptor substrate 2
Database Link:	<a href="#">NP_003740</a> <a href="#">Entrez Gene 8660 Human</a> <a href="#">Q9Y4H2</a>
Synonyms:	IRS-2
Protein Families:	Druggable Genome
Protein Pathways:	Adipocytokine signaling pathway, Insulin signaling pathway, Neurotrophin signaling pathway, Type II diabetes mellitus



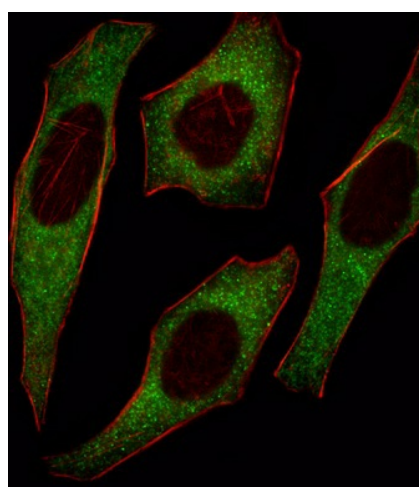
[View online »](#)

**Product images:**

Western blot analysis of anti-IRS2 Antibody (C-term) (Cat.#[TA324988]) in 293 cell line lysates (35ug/lane). IRS2 (arrow) was detected using the purified Pab.



Formalin-fixed and paraffin-embedded human hepatocarcinoma tissue reacted with IRS2 antibody (C-term), which was peroxidase-conjugated to the secondary antibody, followed by DAB staining. This data demonstrates the use of this antibody for immunohistochemistry; clinical relevance has not been evaluated.



IF image of HeLa cell stained with IRS2 Antibody (C-term) (Cat#[TA324988]). HeLa cells were incubated with IRS2 primary antibody (1:25, 1 h at 37°C). For secondary antibody, Alexa Fluor® 488 conjugated donkey anti-rabbit antibody (green) was used (1:400). Cytoplasmic actin was counterstained with Alexa Fluor® 555 (red) conjugated Phalloidin (7 units/ml). IRS2 immunoreactivity is localized to Cytoplasm significantly.