

Product datasheet for TA324985S

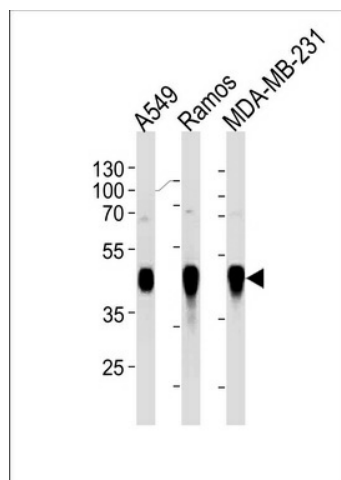
HLA-G (HLA-G) Mouse Monoclonal Antibody [Clone ID: 800CT6.4.2]

Product data:

| | |
|-------------------------|--|
| Product Type: | Primary Antibodies |
| Clone Name: | 800CT6.4.2 |
| Applications: | WB |
| Recommended Dilution: | WB: 1:1000 |
| Reactivity: | Human |
| Host: | Mouse |
| Isotype: | IgG1 |
| Clonality: | Monoclonal |
| Immunogen: | Purified His-tagged HLA-G protein was used to produced this monoclonal antibody. |
| Formulation: | Purified monoclonal antibody supplied in PBS with 0.09% (W/V) sodium azide. |
| Concentration: | lot specific |
| Purification: | This antibody is purified through a protein G column, followed by dialysis against PBS. |
| Conjugation: | Unconjugated |
| Storage: | Store at -20°C as received. |
| Stability: | Stable for 12 months from date of receipt. |
| Predicted Protein Size: | 38224 Da |
| Gene Name: | major histocompatibility complex, class I, G |
| Database Link: | NP_002118 Entrez Gene 3135 Human P17693 |
| Synonyms: | MHC-G |
| Protein Families: | Transmembrane |
| Protein Pathways: | Allograft rejection, Antigen processing and presentation, Autoimmune thyroid disease, Cell adhesion molecules (CAMs), Endocytosis, Graft-versus-host disease, Natural killer cell mediated cytotoxicity, Type I diabetes mellitus, Viral myocarditis |



[View online »](#)

Product images:

HLA-G Antibody (Cat. #TA324985) western blot analysis in A549, Ramos, MDA-MB-231 cell line lysates (35ug/lane). This demonstrates the HLA-G antibody detected the HLA-G protein (arrow).