

Product datasheet for **TA324985**

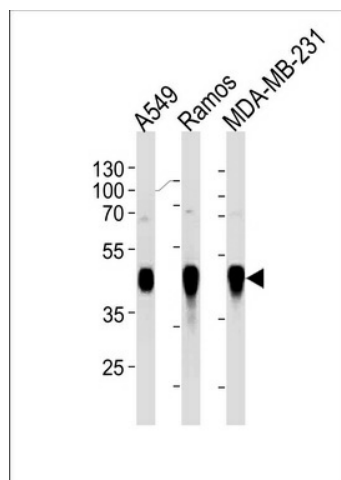
HLA-G (HLA-G) Mouse Monoclonal Antibody [Clone ID: 800CT6.4.2]

Product data:

Product Type:	Primary Antibodies
Clone Name:	800CT6.4.2
Applications:	WB
Recommended Dilution:	WB: 1:1000
Reactivity:	Human
Host:	Mouse
Isotype:	IgG1
Clonality:	Monoclonal
Immunogen:	Purified His-tagged HLA-G protein was used to produced this monoclonal antibody.
Formulation:	Purified monoclonal antibody supplied in PBS with 0.09% (W/V) sodium azide.
Concentration:	lot specific
Purification:	This antibody is purified through a protein G column, followed by dialysis against PBS.
Conjugation:	Unconjugated
Storage:	Store at -20°C as received.
Stability:	Stable for 12 months from date of receipt.
Predicted Protein Size:	38224 Da
Gene Name:	major histocompatibility complex, class I, G
Database Link:	NP_002118 Entrez Gene 3135 Human P17693
Synonyms:	MHC-G
Protein Families:	Transmembrane
Protein Pathways:	Allograft rejection, Antigen processing and presentation, Autoimmune thyroid disease, Cell adhesion molecules (CAMs), Endocytosis, Graft-versus-host disease, Natural killer cell mediated cytotoxicity, Type I diabetes mellitus, Viral myocarditis



[View online »](#)

Product images:

HLA-G Antibody (Cat. #TA324985) western blot analysis in A549, Ramos, MDA-MB-231 cell line lysates (35ug/lane). This demonstrates the HLA-G antibody detected the HLA-G protein (arrow).