

Product datasheet for **TA324984**

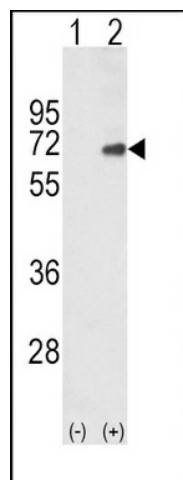
SMAD4 Rabbit Polyclonal Antibody

Product data:

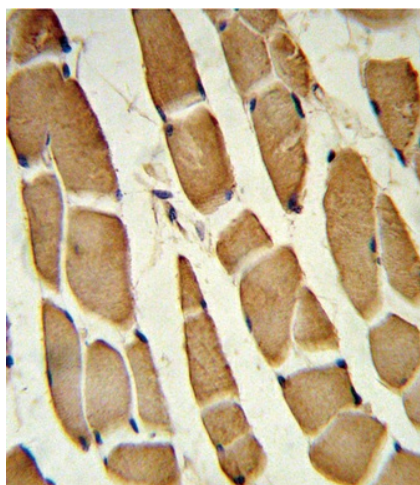
Product Type:	Primary Antibodies
Applications:	FC, IF, IHC, WB
Recommended Dilution:	WB: 1:1000, IHC: 1:10~50, IF: 1:10~50, FC: 1:10~50
Reactivity:	Human (Predicted: Mouse, Rat, Bovine, Pig)
Host:	Rabbit
Isotype:	IgG
Clonality:	Polyclonal
Immunogen:	This SMAD4 antibody is generated from rabbits immunized with a KLH conjugated synthetic peptide between 400-428 amino acids from the C-terminal region of human SMAD4.
Formulation:	Purified polyclonal antibody supplied in PBS with 0.09% (W/V) sodium azide.
Concentration:	lot specific
Purification:	This antibody is prepared by Saturated Ammonium Sulfate (SAS) precipitation followed by dialysis against PBS.
Conjugation:	Unconjugated
Storage:	Store at -20°C as received.
Stability:	Stable for 12 months from date of receipt.
Predicted Protein Size:	60439 Da
Gene Name:	SMAD family member 4
Database Link:	NP_005350 Entrez Gene 17128 Mouse Entrez Gene 50554 Rat Entrez Gene 4089 Human Q13485
Synonyms:	DPC4; JIP; MADH4; MYHRS
Protein Families:	Druggable Genome, Transcription Factors
Protein Pathways:	Adherens junction, Cell cycle, Chronic myeloid leukemia, Colorectal cancer, Pancreatic cancer, Pathways in cancer, TGF-beta signaling pathway, Wnt signaling pathway



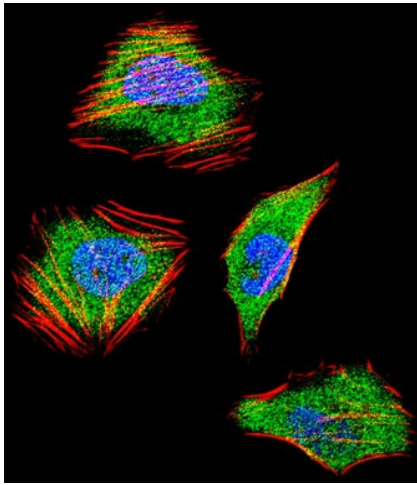
[View online »](#)

Product images:

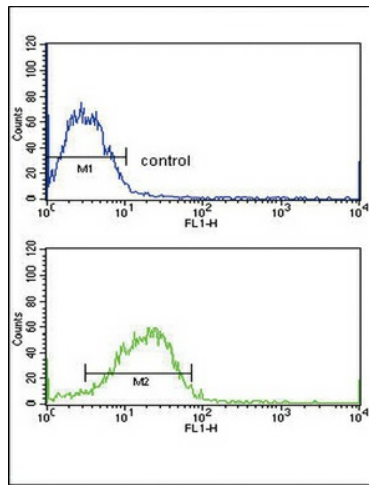
Western blot analysis of SMAD4 (arrow) using rabbit polyclonal SMAD4 Antibody (C-term) (Cat. #TA324984). 293 cell lysates (2 ug/lane) either nontransfected (Lane 1) or transiently transfected with the SMAD4 gene (Lane 2).



Formalin-fixed and paraffin-embedded human skeletal muscle reacted with SMAD4 Antibody (C-term), which was peroxidase-conjugated to the secondary antibody, followed by DAB staining. This data demonstrates the use of this antibody for immunohistochemistry; clinical relevance has not been evaluated.



IF image of HeLa cell stained with SMAD4 Antibody (C-term) (Cat#TA324984). HeLa cells were incubated with SMAD4 primary antibody (1:25, 1 h at 37°C). For secondary antibody, Alexa Fluor® 488 conjugated donkey anti-rabbit antibody (green) was used (1:400). Cytoplasmic actin was counterstained with Alexa Fluor® 555 (red) conjugated Phalloidin (7 units/ml). Nuclei were counterstained with DAPI (blue). SMAD4 immunoreactivity is localized to Cytoplasm and Nucleus significantly.



SMAD4 Antibody (C-term) (Cat. #TA324984) flow cytometric analysis of MCF-7 cells (bottom histogram) compared to a negative control cell (top histogram). FITC-conjugated goat-anti-rabbit secondary antibodies were used for the analysis.