

Product datasheet for **TA324982S**

NRAS Rabbit Polyclonal Antibody

Product data:

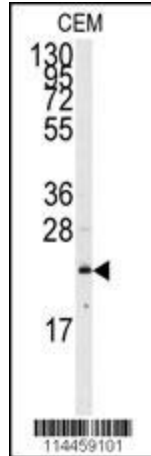
Product Type:	Primary Antibodies
Applications:	FC, IF, WB
Recommended Dilution:	WB: 1:1000, FC: 1:10~50, IF: 1:10~50
Reactivity:	Human (Predicted: Mouse, Rat, Chicken, Pig)
Host:	Rabbit
Isotype:	IgG
Clonality:	Polyclonal
Immunogen:	This NRAS antibody is generated from rabbits immunized with a KLH conjugated synthetic peptide between 72-101 amino acids from the N-terminal region of human NRAS.
Formulation:	Purified polyclonal antibody supplied in PBS with 0.09% (W/V) sodium azide.
Concentration:	lot specific
Purification:	This antibody is prepared by Saturated Ammonium Sulfate (SAS) precipitation followed by dialysis against PBS.
Conjugation:	Unconjugated
Storage:	Store at -20°C as received.
Stability:	Stable for 12 months from date of receipt.
Predicted Protein Size:	21229 Da
Gene Name:	neuroblastoma RAS viral oncogene homolog
Database Link:	NP_002515 Entrez Gene 18176 Mouse Entrez Gene 24605 Rat Entrez Gene 4893 Human P01111
Synonyms:	ALPS4; CMNS; N-ras; NCMS; NRAS1; NS6
Protein Families:	Druggable Genome



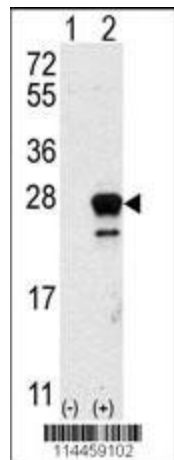
[View online »](#)

Protein Pathways:

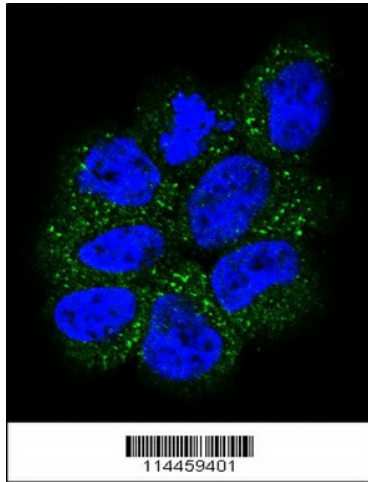
Acute myeloid leukemia, Axon guidance, B cell receptor signaling pathway, Bladder cancer, Chemokine signaling pathway, Chronic myeloid leukemia, Endometrial cancer, ErbB signaling pathway, Fc epsilon RI signaling pathway, Gap junction, Glioma, GnRH signaling pathway, Insulin signaling pathway, Long-term depression, Long-term potentiation, MAPK signaling pathway, Melanogenesis, Melanoma, Natural killer cell mediated cytotoxicity, Neurotrophin signaling pathway, Non-small cell lung cancer, Pathways in cancer, Prostate cancer, Regulation of actin cytoskeleton, Renal cell carcinoma, T cell receptor signaling pathway, Thyroid cancer, Tight junction, VEGF signaling pathway

Product images:


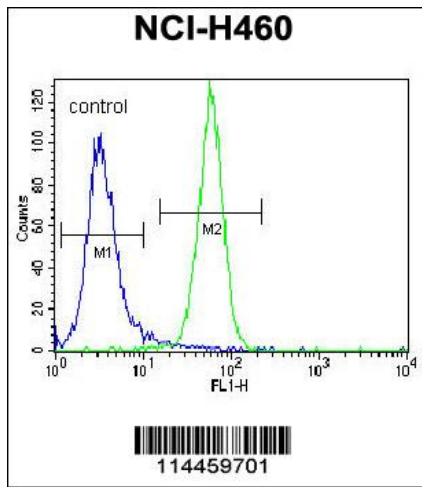
Western blot analysis of anti-NRAS Antibody (N-term) (Cat.#[TA324982]) in CEM cell line lysates (35ug/lane). NRAS (arrow) was detected using the purified Pab.



Western blot analysis of NRAS (arrow) using rabbit polyclonal NRAS Antibody (N-term) (Cat.# [TA324982]). 293 cell lysates (2 ug/lane) either nontransfected (Lane 1) or transiently transfected with the NRAS gene (Lane 2) (Origene Technologies).



Confocal immunofluorescent analysis of NRAS Antibody (N-term) (Cat#[TA324982]) with NCI-H460 cell followed by Alexa Fluor 488-conjugated goat anti-rabbit IgG (green). DAPI was used to stain the cell nuclear (blue).



NRAS Antibody (N-term) (Cat. #[TA324982]) flow cytometric analysis of NCI-H460 cells (right histogram) compared to a negative control cell (left histogram). FITC-conjugated goat-anti-rabbit secondary antibodies were used for the analysis.