

## Product datasheet for TA324979S

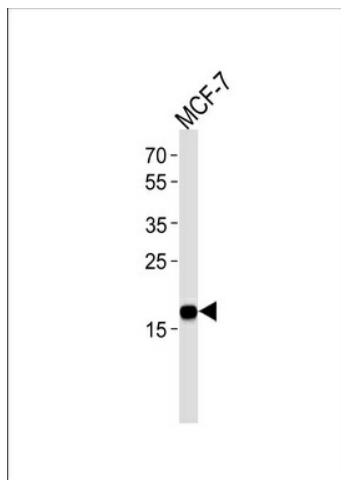
### NM23A (NME1) Mouse Monoclonal Antibody [Clone ID: 1172CT2.4.1.1]

#### Product data:

Product Type:	Primary Antibodies
Clone Name:	1172CT2.4.1.1
Applications:	WB
Recommended Dilution:	WB: 1:1000
Reactivity:	Human
Host:	Mouse
Isotype:	IgG2a
Clonality:	Monoclonal
Immunogen:	Purified His-tagged NME1 protein was used to produced this monoclonal antibody.
Formulation:	Purified monoclonal antibody supplied in PBS with 0.09% (W/V) sodium azide.
Concentration:	lot specific
Purification:	This antibody is purified through a protein G column, followed by dialysis against PBS.
Conjugation:	Unconjugated
Storage:	Store at -20°C as received.
Stability:	Stable for 12 months from date of receipt.
Predicted Protein Size:	17149 Da
Gene Name:	NME/NM23 nucleoside diphosphate kinase 1
Database Link:	<a href="#">NP_000260</a> <a href="#">Entrez Gene 4830 Human</a> <a href="#">P15531</a>
Synonyms:	AWD; GAAD; NB; NBS; NDKA; NDPK-A; NDPKA; NM23; NM23-H1
Protein Families:	Druggable Genome, Stem cell - Pluripotency
Protein Pathways:	Metabolic pathways, Purine metabolism, Pyrimidine metabolism


[View online »](#)

## Product images:



NME1 Antibody (Cat. #TA324979) western blot analysis in MCF-7 cell line lysates (35ug/lane). This demonstrates the NME1 antibody detected the NME1 protein (arrow).