

Product datasheet for **TA324978**

TEC Rabbit Polyclonal Antibody

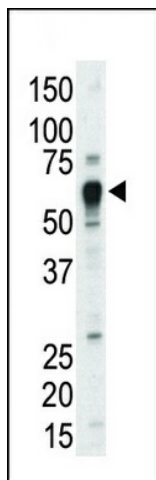
Product data:

Product Type:	Primary Antibodies
Applications:	IF, IHC, WB
Recommended Dilution:	IF: 1:10~50, WB: 1:1000, IHC: 1:50~100
Reactivity:	Human, Mouse
Host:	Rabbit
Isotype:	IgG
Clonality:	Polyclonal
Immunogen:	This TEC antibody is generated from rabbits immunized with a KLH conjugated synthetic peptide between 175-205 amino acids from the Central region of human TEC.
Formulation:	Purified polyclonal antibody supplied in PBS with 0.09% (W/V) sodium azide.
Concentration:	lot specific
Purification:	This antibody is purified through a protein A column, followed by peptide affinity purification.
Conjugation:	Unconjugated
Storage:	Store at -20°C as received.
Stability:	Stable for 12 months from date of receipt.
Predicted Protein Size:	73581 Da
Gene Name:	tec protein tyrosine kinase
Database Link:	NP_003206 Entrez Gene 7006 Human P42680
Synonyms:	PSCTK4
Protein Families:	Druggable Genome, Protein Kinase
Protein Pathways:	T cell receptor signaling pathway

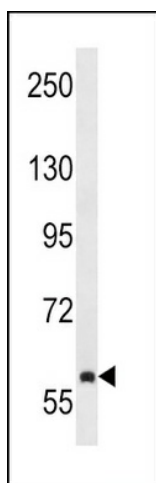


[View online »](#)

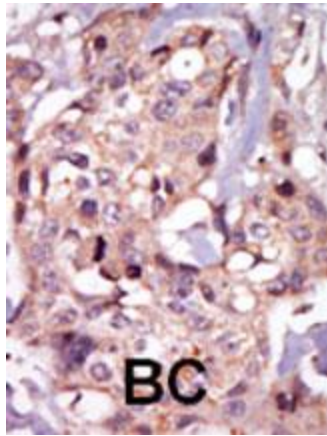
Product images:



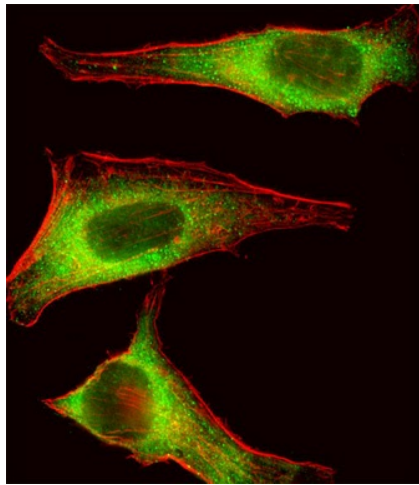
Western blot analysis of anti-TEC Pab (Cat. #TA324978) in mouse liver tissue lysate. TEC (arrow) was detected using purified Pab. Secondary HRP-anti-rabbit was used for signal visualization with chemiluminescence.



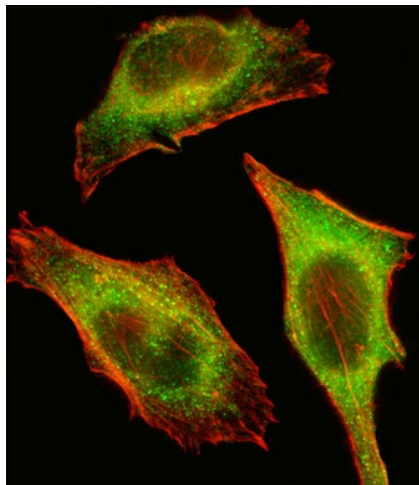
TEC Antibody (F190) (Cat. #TA324978) western blot analysis in NCI-H292 cell line lysates (35ug/lane). This demonstrates the TEC antibody detected the TEC protein (arrow).



Formalin-fixed and paraffin-embedded human cancer tissue reacted with the primary antibody, which was peroxidase-conjugated to the secondary antibody, followed by AEC staining. This data demonstrates the use of this antibody for immunohistochemistry; clinical relevance has not been evaluated. BC = breast carcinoma; HC = hepatocarcinoma.



IF image of HeLa cell stained with TEC Antibody (Center) (Cat#TA324978). HeLa cells were incubated with TEC primary antibody (1:25, 1 h at 37°C). For secondary antibody, Alexa Fluor® 488 conjugated donkey anti-rabbit antibody (green) was used (1:400). Cytoplasmic actin was counterstained with Alexa Fluor® 555 (red) conjugated Phalloidin (7 units/ml). TEC immunoreactivity is localized to Cytoplasm significantly.



IF image of HeLa cell stained with TEC Antibody (Center) (Cat#TA324978). HeLa cells were incubated with TEC primary antibody (1:25, 1 h at 37°C). For secondary antibody, Alexa Fluor® 488 conjugated donkey anti-rabbit antibody (green) was used (1:400). Cytoplasmic actin was counterstained with Alexa Fluor® 555 (red) conjugated Phalloidin (7 units/ml). TEC immunoreactivity is localized to Cytoplasm significantly.