

## Product datasheet for **TA324977S**

### LYN Rabbit Polyclonal Antibody

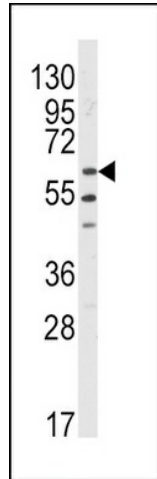
#### Product data:

Product Type:	Primary Antibodies
Applications:	FC, IHC, WB
Recommended Dilution:	WB: 1:1000, FC: 1:10~50, IHC: 1:50~100
Reactivity:	Human
Host:	Rabbit
Isotype:	IgG
Clonality:	Polyclonal
Immunogen:	This LYN antibody is generated from rabbits immunized with a KLH conjugated synthetic peptide between 32-62 amino acids from the N-terminal region of human LYN.
Formulation:	Purified polyclonal antibody supplied in PBS with 0.09% (W/V) sodium azide.
Concentration:	lot specific
Purification:	This antibody is purified through a protein A column, followed by peptide affinity purification.
Conjugation:	Unconjugated
Storage:	Store at -20°C as received.
Stability:	Stable for 12 months from date of receipt.
Predicted Protein Size:	58574 Da
Gene Name:	LYN proto-oncogene, Src family tyrosine kinase
Database Link:	<a href="#">NP_001104567</a> <a href="#">Entrez Gene 4067 Human</a> <a href="#">P07948</a>
Synonyms:	JTK8; p53Lyn; p56Lyn
Protein Families:	Druggable Genome, Protein Kinase
Protein Pathways:	B cell receptor signaling pathway, Chemokine signaling pathway, Epithelial cell signaling in Helicobacter pylori infection, Fc epsilon RI signaling pathway, Fc gamma R-mediated phagocytosis, Long-term depression

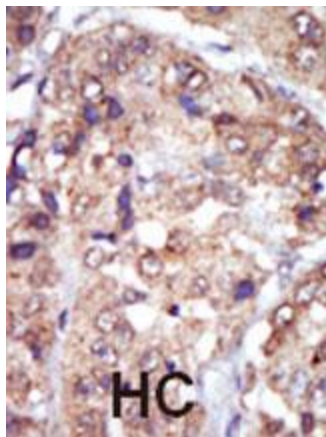


[View online »](#)

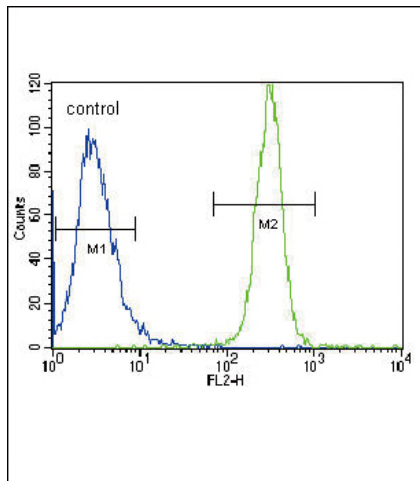
Product images:



Western blot analysis of anti-LYN Antibody (N-term) (Cat.#[TA324977]) in HL60 cell line lysates (35ug/lane). LYN (arrow) was detected using the purified Pab.



Formalin-fixed and paraffin-embedded human cancer tissue reacted with the primary antibody, which was peroxidase-conjugated to the secondary antibody, followed by AEC staining. This data demonstrates the use of this antibody for immunohistochemistry; clinical relevance has not been evaluated. BC = breast carcinoma; HC = hepatocarcinoma.



LYN Antibody (N-term) (Cat. #[TA324977]) flow cytometric analysis of HeLa cells (right histogram) compared to a negative control cell (left histogram). FITC-conjugated goat-anti-rabbit secondary antibodies were used for the analysis.