

## Product datasheet for **TA324971**

### **Bcl x (BCL2L1) Mouse Monoclonal Antibody [Clone ID: 804CT19.1.4]**

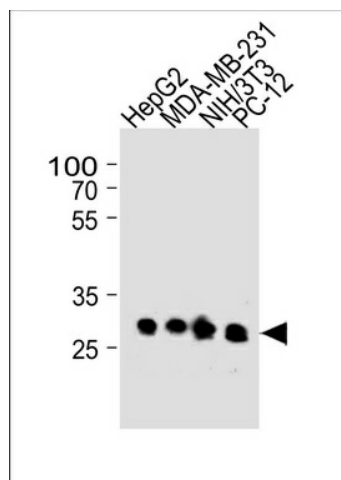
#### **Product data:**

Product Type:	Primary Antibodies
Clone Name:	804CT19.1.4
Applications:	WB
Recommended Dilution:	WB: 1:1000
Reactivity:	Human, Mouse, Rat
Host:	Mouse
Isotype:	IgG1
Clonality:	Monoclonal
Immunogen:	Purified His-tagged BCL2L1 protein was used to produced this monoclonal antibody.
Formulation:	Purified monoclonal antibody supplied in PBS with 0.09% (W/V) sodium azide.
Concentration:	lot specific
Purification:	This antibody is purified through a protein G column, followed by dialysis against PBS.
Conjugation:	Unconjugated
Storage:	Store at -20°C as received.
Stability:	Stable for 12 months from date of receipt.
Predicted Protein Size:	26049 Da
Gene Name:	BCL2 like 1
Database Link:	<a href="#">NP_001182</a> <a href="#">Entrez Gene 12048 Mouse</a> <a href="#">Entrez Gene 24888 Rat</a> <a href="#">Entrez Gene 598 Human</a> <a href="#">Q07817</a>
Synonyms:	Bcl-X; BCL-XL; BCL2L; BCLX; PPP1R52; S
Protein Families:	Druggable Genome, ES Cell Differentiation/IPS, Transmembrane
Protein Pathways:	Amyotrophic lateral sclerosis (ALS), Apoptosis, Chronic myeloid leukemia, Jak-STAT signaling pathway, Pancreatic cancer, Pathways in cancer, Small cell lung cancer

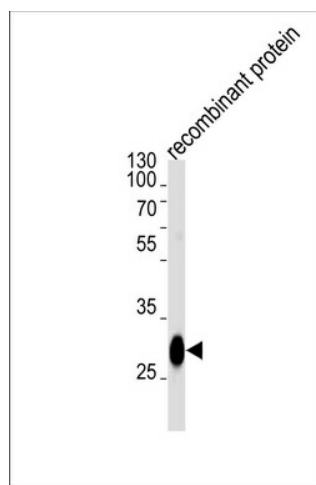


[View online »](#)

## Product images:



BCL2L1 Antibody (Cat. #TA324971) western blot analysis in HepG2, MDA-MB-231, mouse NIH/3T3 and rat PC-12 cell line lysates (35ug/lane). This demonstrates the BCL2L1 antibody detected the BCL2L1 protein (arrow).



BCL2L1 Antibody (Cat. #TA324971) western blot analysis in recombinant protein lysates (35ug/lane). This demonstrates the BCL2L1 antibody detected the BCL2L1 protein (arrow).