

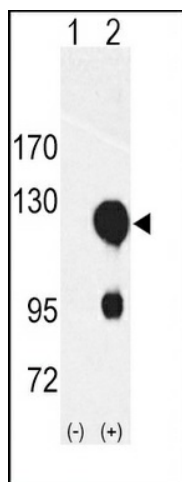
Product datasheet for **TA324968S**

ROR2 Rabbit Polyclonal Antibody

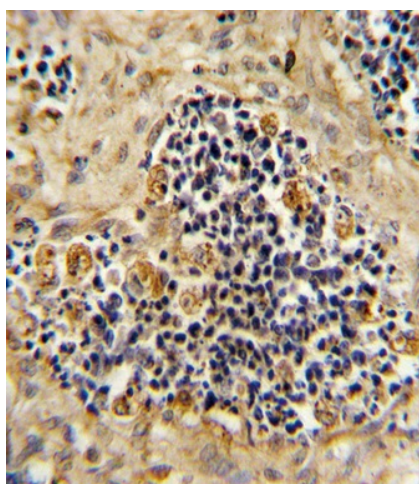
Product data:

| | |
|-------------------------|--|
| Product Type: | Primary Antibodies |
| Applications: | FC, IHC, WB |
| Recommended Dilution: | WB: 1:1000, IHC: 1:10~50, FC: 1:10~50 |
| Reactivity: | Human |
| Host: | Rabbit |
| Isotype: | IgG |
| Clonality: | Polyclonal |
| Immunogen: | This ROR2 antibody is generated from rabbits immunized with a KLH conjugated synthetic peptide between 19-50 amino acids from the N-terminal region of human ROR2. |
| Formulation: | Purified polyclonal antibody supplied in PBS with 0.09% (W/V) sodium azide. |
| Concentration: | lot specific |
| Purification: | This antibody is prepared by Saturated Ammonium Sulfate (SAS) precipitation followed by dialysis against PBS. |
| Conjugation: | Unconjugated |
| Storage: | Store at -20°C as received. |
| Stability: | Stable for 12 months from date of receipt. |
| Predicted Protein Size: | 104757 Da |
| Gene Name: | receptor tyrosine kinase like orphan receptor 2 |
| Database Link: | NP_004551 Entrez Gene 4920 Human Q01974 |
| Synonyms: | BDB; BDB1; NTRKR2 |
| Protein Families: | Druggable Genome, Protein Kinase, Transmembrane |

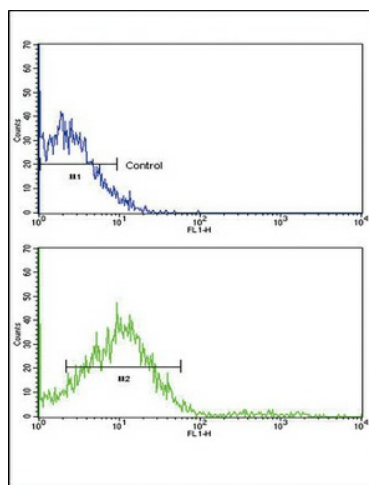
[View online »](#)

Product images:


Western blot analysis of ROR2 (arrow) using rabbit polyclonal ROR2 Antibody (N-term) (Cat.# [TA324968]). 293 cell lysates (2 ug/lane) either nontransfected (Lane 1) or transiently transfected with the ROR2 gene (Lane 2) (Origene Technologies).



Formalin-fixed and paraffin-embedded human kidney carcinoma reacted with ROR2 Antibody (N-term), which was peroxidase-conjugated to the secondary antibody, followed by DAB staining. This data demonstrates the use of this antibody for immunohistochemistry; clinical relevance has not been evaluated.



Flow cytometric analysis of NCI-H292 cells using ROR2 Antibody (N-term) (bottom histogram) compared to a negative control cell (top histogram). FITC-conjugated goat-anti-rabbit secondary antibodies were used for the analysis.