

Product datasheet for **TA324968**

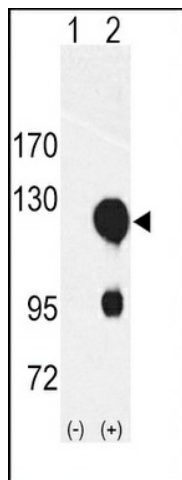
ROR2 Rabbit Polyclonal Antibody

Product data:

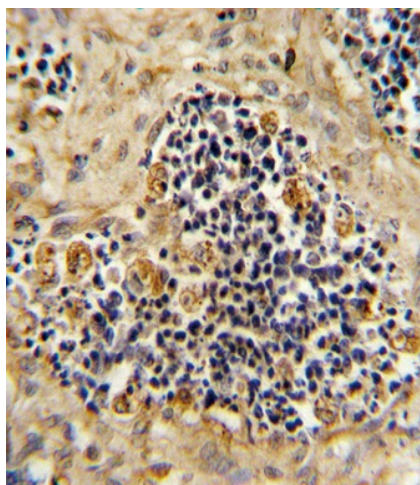
Product Type:	Primary Antibodies
Applications:	FC, IHC, WB
Recommended Dilution:	WB: 1:1000, IHC: 1:10~50, FC: 1:10~50
Reactivity:	Human
Host:	Rabbit
Isotype:	IgG
Clonality:	Polyclonal
Immunogen:	This ROR2 antibody is generated from rabbits immunized with a KLH conjugated synthetic peptide between 19-50 amino acids from the N-terminal region of human ROR2.
Formulation:	Purified polyclonal antibody supplied in PBS with 0.09% (W/V) sodium azide.
Concentration:	lot specific
Purification:	This antibody is prepared by Saturated Ammonium Sulfate (SAS) precipitation followed by dialysis against PBS.
Conjugation:	Unconjugated
Storage:	Store at -20°C as received.
Stability:	Stable for 12 months from date of receipt.
Predicted Protein Size:	104757 Da
Gene Name:	receptor tyrosine kinase like orphan receptor 2
Database Link:	NP_004551 Entrez Gene 4920 Human Q01974
Synonyms:	BDB; BDB1; NTRKR2
Protein Families:	Druggable Genome, Protein Kinase, Transmembrane



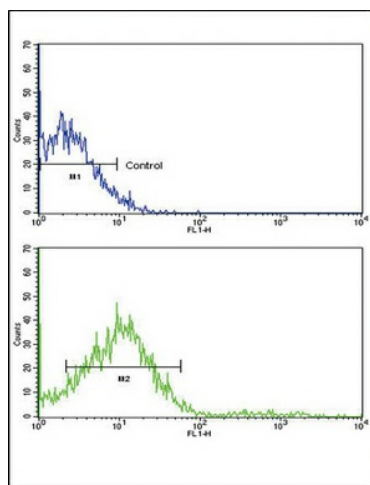
[View online »](#)

Product images:

Western blot analysis of ROR2 (arrow) using rabbit polyclonal ROR2 Antibody (N-term) (Cat.#TA324968). 293 cell lysates (2 ug/lane) either nontransfected (Lane 1) or transiently transfected with the ROR2 gene (Lane 2) (Origene Technologies).



Formalin-fixed and paraffin-embedded human kidney carcinoma reacted with ROR2 Antibody (N-term), which was peroxidase-conjugated to the secondary antibody, followed by DAB staining. This data demonstrates the use of this antibody for immunohistochemistry; clinical relevance has not been evaluated.



Flow cytometric analysis of NCI-H292 cells using ROR2 Antibody (N-term) (bottom histogram) compared to a negative control cell (top histogram). FITC-conjugated goat-anti-rabbit secondary antibodies were used for the analysis.