

Product datasheet for **TA324966**

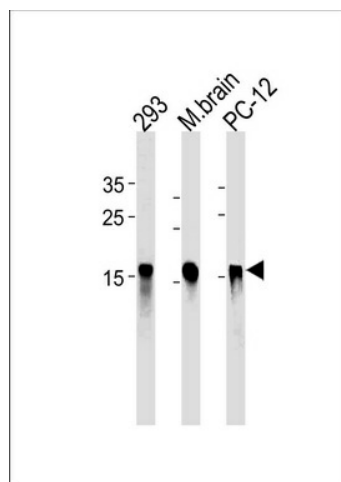
PIN1 Mouse Monoclonal Antibody [Clone ID: 855CT1.7.5]

Product data:

Product Type:	Primary Antibodies
Clone Name:	855CT1.7.5
Applications:	WB
Recommended Dilution:	WB: 1:5000
Reactivity:	Human, Mouse, Rat
Host:	Mouse
Isotype:	IgG1
Clonality:	Monoclonal
Immunogen:	Purified His-tagged PIN1 protein was used to produced this monoclonal antibody.
Formulation:	Mouse monoclonal antibody supplied in crude ascites with 0.09% (W/V) sodium azide.
Concentration:	lot specific
Conjugation:	Unconjugated
Storage:	Store at -20°C as received.
Stability:	Stable for 12 months from date of receipt.
Predicted Protein Size:	18243 Da
Gene Name:	peptidylprolyl cis/trans isomerase, NIMA-interacting 1
Database Link:	NP_006212 Entrez Gene 23988 MouseEntrez Gene 298696 RatEntrez Gene 5300 Human Q13526
Synonyms:	DOD; UBL5
Protein Families:	Druggable Genome
Protein Pathways:	RIG-I-like receptor signaling pathway



[View online »](#)

Product images:

PIN1 Antibody (Cat. #TA324966) western blot analysis in 293, rat PC-12 cell line and mouse brain tissue lysates (35ug/lane). This demonstrates the PIN1 antibody detected the PIN1 protein (arrow).