

Product datasheet for **TA324965**

MUSK Rabbit Polyclonal Antibody

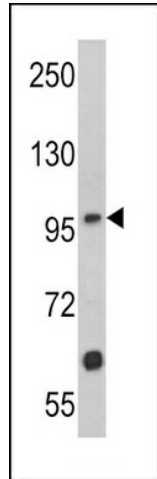
Product data:

Product Type:	Primary Antibodies
Applications:	FC, IHC, WB
Recommended Dilution:	WB: 1:1000, FC: 1:10~50, IHC: 1:10~50
Reactivity:	Human (Predicted: Mouse, Rat)
Host:	Rabbit
Isotype:	IgG
Clonality:	Polyclonal
Immunogen:	This MUSK antibody is generated from rabbits immunized with a KLH conjugated synthetic peptide between 35-65 amino acids from the N-terminal region of human MUSK.
Formulation:	Purified polyclonal antibody supplied in PBS with 0.09% (W/V) sodium azide.
Concentration:	lot specific
Purification:	This antibody is prepared by Saturated Ammonium Sulfate (SAS) precipitation followed by dialysis against PBS.
Conjugation:	Unconjugated
Storage:	Store at -20°C as received.
Stability:	Stable for 12 months from date of receipt.
Predicted Protein Size:	97056 Da
Gene Name:	muscle associated receptor tyrosine kinase
Database Link:	NP_005583 Entrez Gene 18198 Mouse Entrez Gene 81725 Rat Entrez Gene 4593 Human O15146
Synonyms:	MGC126323; MGC126324
Protein Families:	Druggable Genome, Protein Kinase, Transmembrane

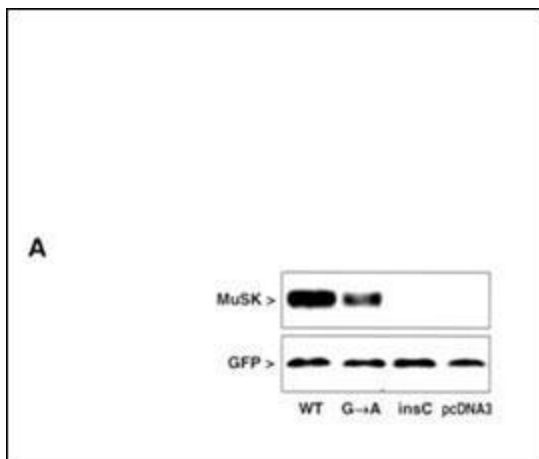


[View online »](#)

Product images:



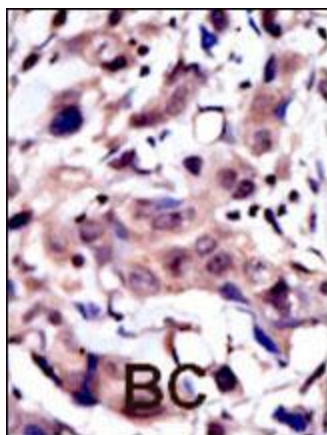
Western blot analysis of MUSK Antibody (N-term) (Cat. #TA324965) in Jurkat cell line lysates (35ug/lane). MUSK (arrow) was detected using the purified Pab.



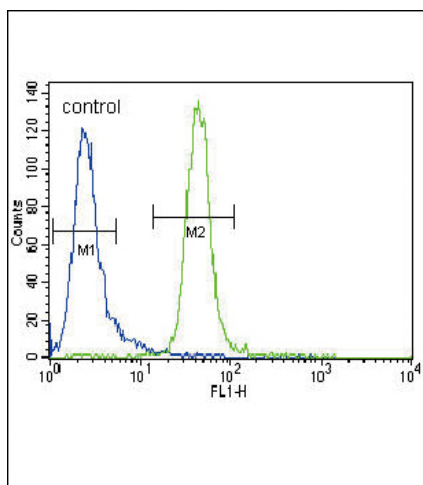
MuSK protein expression in extracts of COS cells after transfection with MuSK mutated and GFP constructs. WB with polyclonal MuSK and monoclonal GFP antibodies showed normal expression of the wild-type MuSK protein (WT), diminished expression of the GA mutant MuSK and no expression of the insC mutant or the pcDNA3 vector alone in transfected COS cells. GFP cotransfection was used to verify transfection efficiency.



HA-tagged MuSK and GFP constructs were transfected into C2C12 cells. Transfected C2C12 cells were treated with cycloheximide (CHX) and at different times after addition of CHX, amounts of WT and mutant MuSK were analyzed by WB with anti-HA antibody. Alpha-tubulin was used as an internal control and transfection efficiency was verified with anti-GFP antibody.



Formalin-fixed and paraffin-embedded human cancer tissue reacted with the primary antibody, which was peroxidase-conjugated to the secondary antibody, followed by AEC staining. This data demonstrates the use of this antibody for immunohistochemistry; clinical relevance has not been evaluated. BC = breast carcinoma; HC = hepatocarcinoma.



MUSK Antibody (N-term) (Cat. #TA324965) flow cytometric analysis of CEM cells (right histogram) compared to a negative control cell (left histogram). FITC-conjugated goat-anti-rabbit secondary antibodies were used for the analysis.