

## Product datasheet for **TA324963**

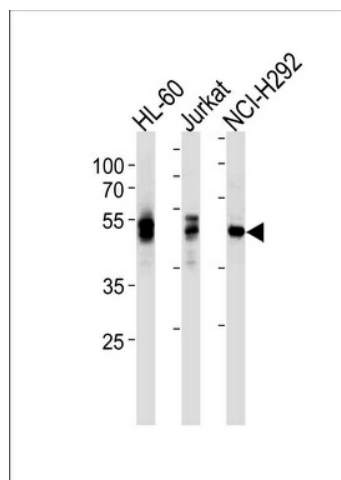
### LCK Mouse Monoclonal Antibody [Clone ID: 845CT3.5.2]

#### Product data:

Product Type:	Primary Antibodies
Clone Name:	845CT3.5.2
Applications:	WB
Recommended Dilution:	WB: 1:5000
Reactivity:	Human
Host:	Mouse
Isotype:	IgG1
Clonality:	Monoclonal
Immunogen:	Purified His-tagged LCK protein was used to produced this monoclonal antibody.
Formulation:	Mouse monoclonal antibody supplied in crude ascites with 0.09% (W/V) sodium azide.
Concentration:	lot specific
Conjugation:	Unconjugated
Storage:	Store at -20°C as received.
Stability:	Stable for 12 months from date of receipt.
Predicted Protein Size:	58001 Da
Gene Name:	LCK proto-oncogene, Src family tyrosine kinase
Database Link:	<a href="#">NP_001036236</a> <a href="#">Entrez Gene 3932 Human</a> <a href="#">P06239</a>
Synonyms:	IMD22; LSK; p56lck; pp58lck; YT16
Protein Families:	Druggable Genome, Protein Kinase, Stem cell - Pluripotency
Protein Pathways:	Natural killer cell mediated cytotoxicity, Primary immunodeficiency, T cell receptor signaling pathway



[View online »](#)

**Product images:**

LCK Antibody (Cat. #TA324963) western blot analysis in HL-60, Jurkat, NCI-H292 cell line lysates (35ug/lane). This demonstrates the LCK antibody detected the LCK protein (arrow).