

Product datasheet for **TA324961S**

FGFR4 Rabbit Polyclonal Antibody

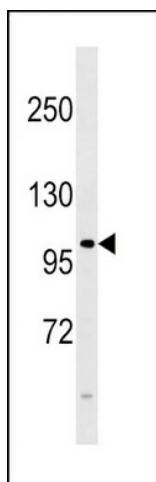
Product data:

Product Type:	Primary Antibodies
Applications:	FC, IF, IHC, WB
Recommended Dilution:	WB: 1:1000, IF: 1:200, FC: 1:10~50, IHC: 1:50~100
Reactivity:	Human
Host:	Rabbit
Isotype:	IgG
Clonality:	Polyclonal
Immunogen:	This FGFR4 antibody is generated from rabbits immunized with a KLH conjugated synthetic peptide between 24-55 amino acids from the N-terminal region of human FGFR4.
Formulation:	Purified polyclonal antibody supplied in PBS with 0.09% (W/V) sodium azide.
Concentration:	lot specific
Purification:	This antibody is purified through a protein A column, followed by peptide affinity purification.
Conjugation:	Unconjugated
Storage:	Store at -20°C as received.
Stability:	Stable for 12 months from date of receipt.
Predicted Protein Size:	87954 Da
Gene Name:	fibroblast growth factor receptor 4
Database Link:	NP_002002 Entrez Gene 2264 Human P22455
Synonyms:	CD334; JTK2; TKF
Protein Families:	Druggable Genome, Protein Kinase
Protein Pathways:	Endocytosis, MAPK signaling pathway, Regulation of actin cytoskeleton

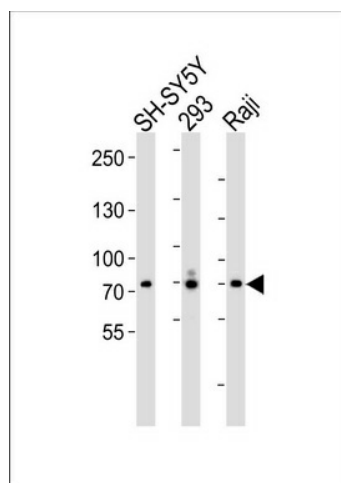


[View online »](#)

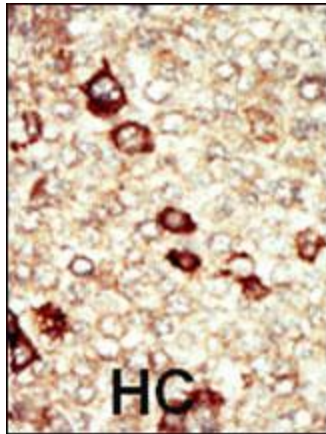
Product images:



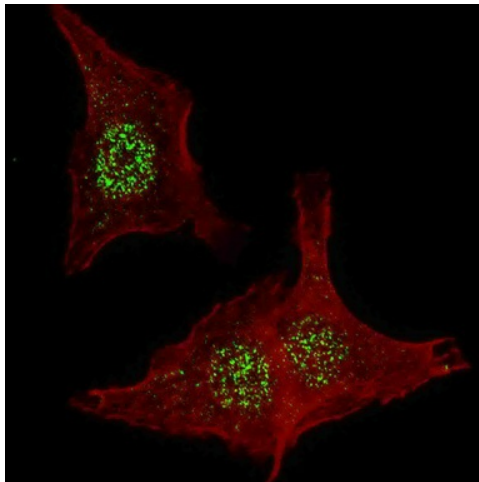
FGFR4 Antibody (E39) (Cat. #[TA324961]) western blot analysis in 293 cell line lysates (35ug/lane). This demonstrates the FGFR4 antibody detected the FGFR4 protein (arrow).



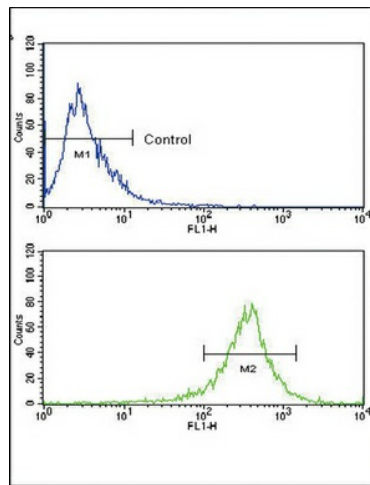
Western blot analysis of lysates from SH-SY5Y, 293, Raji cell line (from left to right), using FGFR4 Antibody (N-term) (Cat. #[TA324961]). [TA324961] was diluted at 1:1000 at each lane. A goat anti-rabbit IgG H&L (HRP) at 1:5000 dilution was used as the secondary antibody. Lysates at 35ug per lane.



Formalin-fixed and paraffin-embedded human cancer tissue reacted with the primary antibody, which was peroxidase-conjugated to the secondary antibody, followed by AEC staining. This data demonstrates the use of this antibody for immunohistochemistry; clinical relevance has not been evaluated. BC = breast carcinoma; HC = hepatocarcinoma.



IF image of HeLa cells stained with FGFR4 (N-term) antibody. HeLa cells were incubated with [TA324961] FGFR4 (N-term) primary antibody (1:200, 2 h at RT). For secondary antibody, Alexa Fluor® 488 conjugated donkey anti-rabbit antibody (green) was used (1:1000, 1h). Nuclei were counterstained with Hoechst 33342 (blue). Note the highly specific localization of the FGFR4 mainly to the nucleus, supported by Human Protein Atlas Data (<http://www.proteinatlas.org/ENSG00000160867>).



Flow cytometric analysis of WiDr cells using FGFR4 Antibody (N-term) (bottom histogram) compared to a negative control cell (top histogram). FITC-conjugated goat-anti-rabbit secondary antibodies were used for the analysis.