

## Product datasheet for **TA324958**

### Her2 (ERBB2) Rabbit Polyclonal Antibody

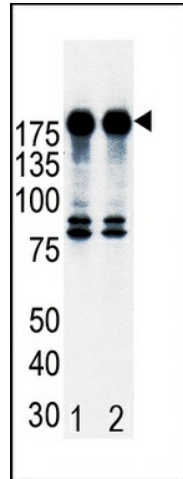
#### Product data:

Product Type:	Primary Antibodies
Applications:	FC, IHC, WB
Recommended Dilution:	WB: 1:1000, FC: 1:10~50, IHC: 1:50~100
Reactivity:	Human (Predicted: Mouse, Rat)
Host:	Rabbit
Isotype:	IgG
Clonality:	Polyclonal
Immunogen:	This ERBB2 antibody is generated from rabbits immunized with a KLH conjugated synthetic peptide between 21-52 amino acids from the N-terminal region of human ERBB2.
Formulation:	Purified polyclonal antibody supplied in PBS with 0.09% (W/V) sodium azide.
Concentration:	lot specific
Purification:	This antibody is prepared by Saturated Ammonium Sulfate (SAS) precipitation followed by dialysis against PBS.
Conjugation:	Unconjugated
Storage:	Store at -20°C as received.
Stability:	Stable for 12 months from date of receipt.
Predicted Protein Size:	137910 Da
Gene Name:	erb-b2 receptor tyrosine kinase 2
Database Link:	<a href="#">NP_001005862</a> <a href="#">Entrez Gene 13866 Mouse</a> <a href="#">Entrez Gene 24337 Rat</a> <a href="#">Entrez Gene 2064 Human</a> <a href="#">P04626</a>
Synonyms:	CD340; HER-2; HER2; MLN 19; NEU; neu; NGL; TKR1
Protein Families:	Druggable Genome, Protein Kinase, Transmembrane
Protein Pathways:	Adherens junction, Bladder cancer, Calcium signaling pathway, Endometrial cancer, ErbB signaling pathway, Focal adhesion, Non-small cell lung cancer, Pancreatic cancer, Pathways in cancer, Prostate cancer

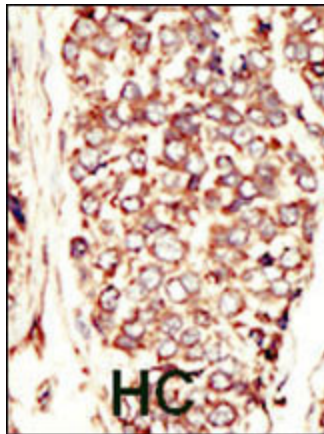


[View online »](#)

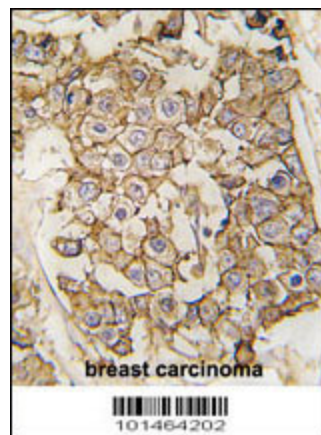
Product images:



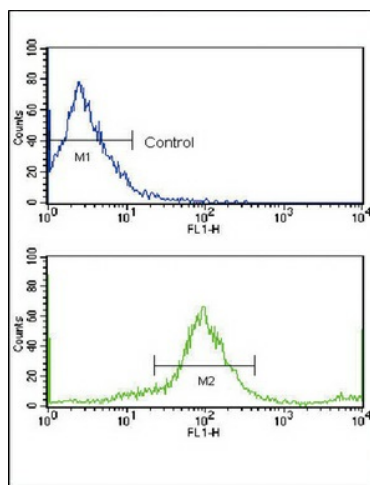
Western blot analysis of ErbB2 (arrow) in T47D cell lysates, either noninduced (Lane 1) or induced with HRG (Lane 2).



Formalin-fixed and paraffin-embedded human cancer tissue reacted with the primary antibody, which was peroxidase-conjugated to the secondary antibody, followed by AEC staining. This data demonstrates the use of this antibody for immunohistochemistry; clinical relevance has not been evaluated. BC = breast carcinoma; HC = hepatocarcinoma.



Formalin-fixed and paraffin-embedded human breast carcinoma tissue reacted with HER2/ErbB2 antibody (N-term) (Cat.#TA324958), which was peroxidase-conjugated to the secondary antibody, followed by DAB staining. This data demonstrates the use of this antibody for immunohistochemistry; clinical relevance has not been evaluated.



Flow cytometric analysis of MCF-7 cells using HER2/ErbB2 Antibody (N-term) (bottom histogram) compared to a negative control cell (top histogram). FITC-conjugated goat-anti-rabbit secondary antibodies were used for the analysis.