

Product datasheet for TA324954

EGFR Rabbit Polyclonal Antibody

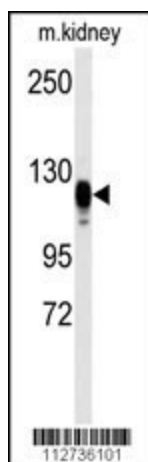
Product data:

Product Type:	Primary Antibodies
Applications:	IHC, WB
Recommended Dilution:	WB: 1:1000, IHC: 1:10~50
Reactivity:	Human, Mouse
Host:	Rabbit
Isotype:	IgG
Clonality:	Polyclonal
Immunogen:	This EGFR antibody is generated from rabbits immunized with a KLH conjugated synthetic peptide between 1048-1077 amino acids from human EGFR.
Formulation:	Purified polyclonal antibody supplied in PBS with 0.09% (W/V) sodium azide.
Concentration:	lot specific
Purification:	This antibody is purified through a protein A column, followed by peptide affinity purification.
Conjugation:	Unconjugated
Storage:	Store at -20°C as received.
Stability:	Stable for 12 months from date of receipt.
Predicted Protein Size:	134277 Da
Gene Name:	epidermal growth factor receptor
Database Link:	NP_005219 Entrez Gene 13649 Mouse Entrez Gene 1956 Human P00533
Synonyms:	ERBB; ERBB1; HER1; mENA; NISBD2; PIG61
Protein Families:	Adult stem cells, Cancer stem cells, Druggable Genome, ES Cell Differentiation/IPS, Protein Kinase, Secreted Protein, Stem cell relevant signaling - JAK/STAT signaling pathway, Transmembrane

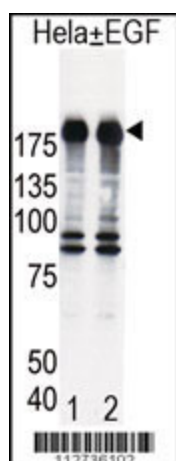

[View online »](#)

Protein Pathways:

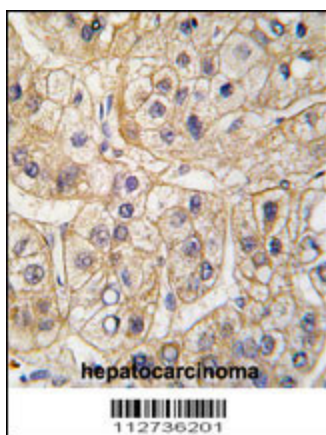
Adherens junction, Bladder cancer, Calcium signaling pathway, Colorectal cancer, Cytokine-cytokine receptor interaction, Dorso-ventral axis formation, Endocytosis, Endometrial cancer, Epithelial cell signaling in Helicobacter pylori infection, ErbB signaling pathway, Focal adhesion, Gap junction, Glioma, GnRH signaling pathway, MAPK signaling pathway, Melanoma, Non-small cell lung cancer, Pancreatic cancer, Pathways in cancer, Prostate cancer, Regulation of actin cytoskeleton

Product images:


Western blot analysis of anti-EGFR Antibody (S1070) (Cat.#TA324954) in kidney heart tissue lysates (35ug/lane). EGFR (arrow) was detected using the purified Pab.



Western blot analysis of EGFR (arrow) in HeLa cell lysates, either induced (Lane 1) or noninduced with EGF (Lane 2).



Formalin-fixed and paraffin-embedded human hepatocarcinoma tissue reacted with EGFR Antibody (S1070), which was peroxidase-conjugated to the secondary antibody, followed by DAB staining. This data demonstrates the use of this antibody for immunohistochemistry; clinical relevance has not been evaluated.