

Product datasheet for **TA324950S**

Proprotein Convertase 2 (PCSK2) Rabbit Polyclonal Antibody

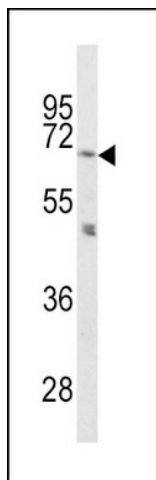
Product data:

Product Type:	Primary Antibodies
Applications:	FC, IF, IHC, WB
Recommended Dilution:	WB: 1:1000, IHC: 1:10~50, IF: 1:10~50, FC: 1:10~50
Reactivity:	Human, Mouse (Predicted: Rat, Pig)
Host:	Rabbit
Isotype:	IgG
Clonality:	Polyclonal
Immunogen:	This PCSK2 antibody is generated from rabbits immunized with a KLH conjugated synthetic peptide between 87-116 amino acids from the N-terminal region of human PCSK2.
Formulation:	Purified polyclonal antibody supplied in PBS with 0.09% (W/V) sodium azide.
Concentration:	lot specific
Purification:	This antibody is prepared by Saturated Ammonium Sulfate (SAS) precipitation followed by dialysis against PBS.
Conjugation:	Unconjugated
Storage:	Store at -20°C as received.
Stability:	Stable for 12 months from date of receipt.
Predicted Protein Size:	70565 Da
Gene Name:	proprotein convertase subtilisin/kexin type 2
Database Link:	NP_002585 Entrez Gene 18549 Mouse Entrez Gene 25121 Rat Entrez Gene 5126 Human P16519
Synonyms:	NEC-2; NEC 2; NEC2; PC2; SPC2
Protein Families:	Druggable Genome, Protease, Secreted Protein

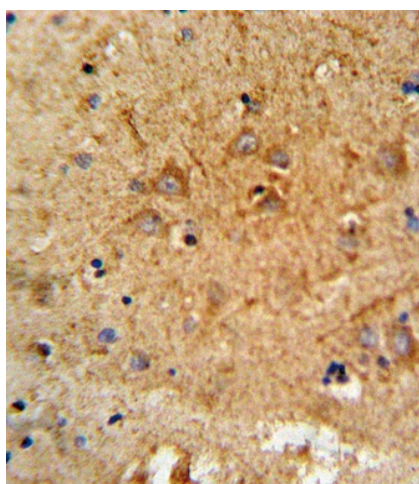


[View online »](#)

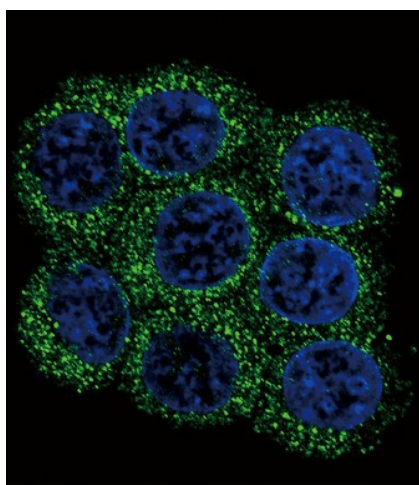
Product images:



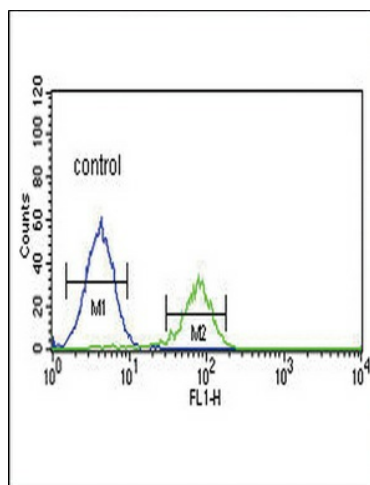
Western blot analysis of PCSK2 Antibody (N-term) (Cat. #TA324950) in mouse cerebellum tissue lysates (35ug/lane). PCSK2 (arrow) was detected using the purified Pab.



Formalin-fixed and paraffin-embedded human brain tissue reacted with PCSK2 Antibody (N-term), which was peroxidase-conjugated to the secondary antibody, followed by DAB staining. This data demonstrates the use of this antibody for immunohistochemistry; clinical relevance has not been evaluated.



Confocal immunofluorescent analysis of PCSK2 Antibody (N-term) (Cat#[TA324950]) with 293 cell followed by Alexa Fluor 488-conjugated goat anti-rabbit IgG (green). DAPI was used to stain the cell nuclear (blue).



PCSK2 Antibody (N-term) (Cat. #[TA324950]) flow cytometric analysis of K562 cells (right histogram) compared to a negative control cell (left histogram). FITC-conjugated goat-anti-rabbit secondary antibodies were used for the analysis.