

Product datasheet for TA324949S

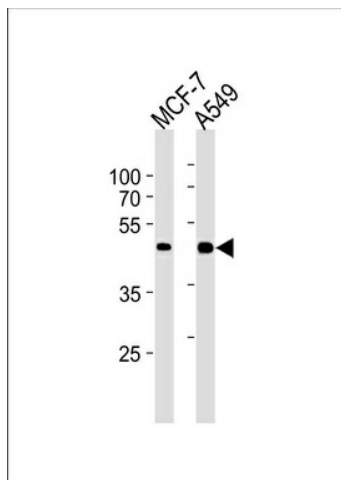
CCRK (CDK20) Mouse Monoclonal Antibody [Clone ID: 885CT27.1.1]

Product data:

Product Type:	Primary Antibodies
Clone Name:	885CT27.1.1
Applications:	WB
Recommended Dilution:	WB: 1:1000
Reactivity:	Human
Host:	Mouse
Isotype:	IgG1
Clonality:	Monoclonal
Immunogen:	Purified His-tagged CCRK protein was used to produced this monoclonal antibody.
Formulation:	Purified monoclonal antibody supplied in PBS with 0.09% (W/V) sodium azide.
Concentration:	lot specific
Purification:	This antibody is purified through a protein G column, followed by dialysis against PBS.
Conjugation:	Unconjugated
Storage:	Store at -20°C as received.
Stability:	Stable for 12 months from date of receipt.
Predicted Protein Size:	38695 Da
Gene Name:	cyclin-dependent kinase 20
Database Link:	NP_001034892 Entrez Gene 23552 Human Q8IZL9
Synonyms:	CCRK; CDCH; P42; PNQALRE
Protein Families:	Druggable Genome, Protein Kinase


[View online »](#)

Product images:



CCRK Antibody (N-term) (Cat. #TA324949)
western blot analysis in MCF-7, A549 cell line
lysates (35ug/lane). This demonstrates the CCRK
antibody detected the CCRK protein (arrow).