

## Product datasheet for **TA324947**

### CCRK (CDK20) Mouse Monoclonal Antibody [Clone ID: 885CT27.1.1]

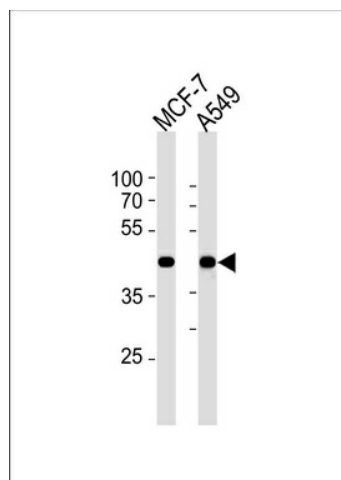
#### Product data:

Product Type:	Primary Antibodies
Clone Name:	885CT27.1.1
Applications:	WB
Recommended Dilution:	WB: 1:5000
Reactivity:	Human
Host:	Mouse
Isotype:	IgG1
Clonality:	Monoclonal
Immunogen:	Purified His-tagged CCRK protein was used to produced this monoclonal antibody.
Formulation:	Mouse monoclonal antibody supplied in crude ascites with 0.09% (W/V) sodium azide.
Concentration:	lot specific
Conjugation:	Unconjugated
Storage:	Store at -20°C as received.
Stability:	Stable for 12 months from date of receipt.
Predicted Protein Size:	38695 Da
Gene Name:	cyclin-dependent kinase 20
Database Link:	<a href="#">NP_001034892</a> <a href="#">Entrez Gene 23552 Human</a> <a href="#">Q8IZL9</a>
Synonyms:	CCRK; CDCH; P42; PNQALRE
Protein Families:	Druggable Genome, Protein Kinase



[View online »](#)

## Product images:



CCRK Antibody (N-term) (Cat. #TA324947)  
western blot analysis in MCF-7, A549 cell line  
lysates (35ug/lane). This demonstrates the CCRK  
antibody detected the CCRK protein (arrow).