

Product datasheet for **TA324945S**

Aldolase C (ALDOC) Mouse Monoclonal Antibody [Clone ID: 859CT9.5.3]

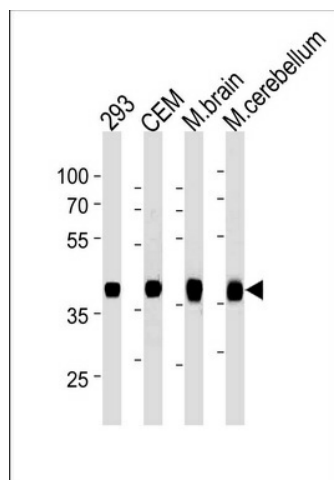
Product data:

Product Type:	Primary Antibodies
Clone Name:	859CT9.5.3
Applications:	WB
Recommended Dilution:	WB: 1:5000
Reactivity:	Human, Mouse
Host:	Mouse
Isotype:	IgG3
Clonality:	Monoclonal
Immunogen:	Purified His-tagged ALDOC protein was used to produced this monoclonal antibody.
Formulation:	Mouse monoclonal antibody supplied in crude ascites with 0.09% (W/V) sodium azide.
Concentration:	lot specific
Conjugation:	Unconjugated
Storage:	Store at -20°C as received.
Stability:	Stable for 12 months from date of receipt.
Predicted Protein Size:	39456 Da
Gene Name:	aldolase, fructose-bisphosphate C
Database Link:	NP_005156 Entrez Gene 11676 Mouse Entrez Gene 230 Human P09972
Synonyms:	ALDC
Protein Pathways:	Fructose and mannose metabolism, Glycolysis / Gluconeogenesis, Metabolic pathways, Pentose phosphate pathway



[View online »](#)

Product images:



ALDOC Antibody (C-term) (Cat. #[TA324945]) western blot analysis in 293, CEM cell line and mouse brain, cerebellum tissue lysates (35ug/lane). This demonstrates the ALDOC antibody detected the ALDOC protein (arrow).