

Product datasheet for **TA324944**

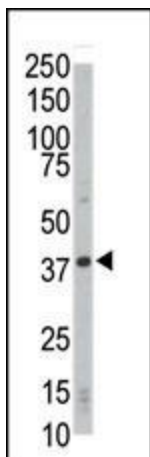
CDK4 Rabbit Polyclonal Antibody

Product data:

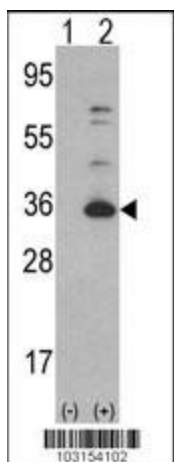
| | |
|-------------------------|---|
| Product Type: | Primary Antibodies |
| Applications: | FC, IF, IHC, WB |
| Recommended Dilution: | IF: 1:10~50, WB: 1:1000, IHC: 1:50~100, FC: 1:10~50 |
| Reactivity: | Human |
| Host: | Rabbit |
| Isotype: | IgG |
| Clonality: | Polyclonal |
| Immunogen: | This CDK4 antibody is generated from rabbits immunized with a KLH conjugated synthetic peptide between 273-305 amino acids from the C-terminal region of human CDK4. |
| Formulation: | Purified polyclonal antibody supplied in PBS with 0.09% (W/V) sodium azide. |
| Concentration: | lot specific |
| Purification: | This antibody is prepared by Saturated Ammonium Sulfate (SAS) precipitation followed by dialysis against PBS. |
| Conjugation: | Unconjugated |
| Storage: | Store at -20°C as received. |
| Stability: | Stable for 12 months from date of receipt. |
| Predicted Protein Size: | 33730 Da |
| Gene Name: | cyclin-dependent kinase 4 |
| Database Link: | NP_000066 Entrez Gene 1019 Human P11802 |
| Synonyms: | CMM3; PSK-J3 |
| Protein Families: | Druggable Genome, Protein Kinase |
| Protein Pathways: | Bladder cancer, Cell cycle, Chronic myeloid leukemia, Glioma, Melanoma, Non-small cell lung cancer, p53 signaling pathway, Pancreatic cancer, Pathways in cancer, Small cell lung cancer, T cell receptor signaling pathway, Tight junction |



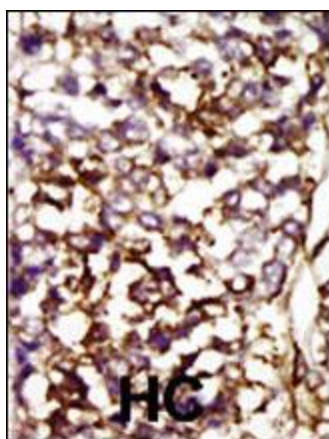
[View online »](#)

Product images:


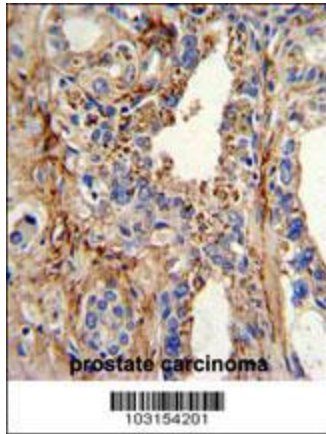
Western blot analysis of anti-CDK4 Pab (Cat. #TA324944) in HL-60 cell lysate. CDK4 (arrow) was detected using purified Pab. Secondary HRP-anti-rabbit was used for signal visualization with chemiluminescence.



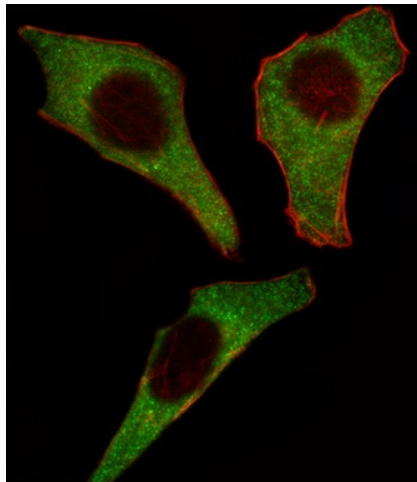
Western blot analysis of CDK4 (arrow) using rabbit polyclonal CDK4 Antibody (C-term) (Cat. #TA324944). 293 cell lysates (2 ug/lane) either nontransfected (Lane 1) or transiently transfected with the CDK4 gene (Lane 2) (Origene Technologies).



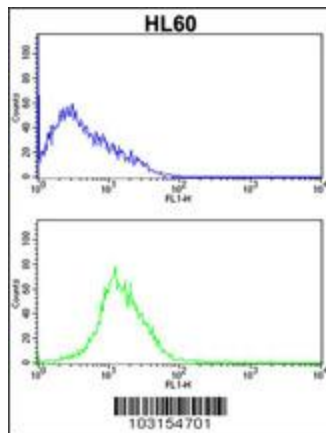
Formalin-fixed and paraffin-embedded human cancer tissue reacted with the primary antibody, which was peroxidase-conjugated to the secondary antibody, followed by AEC staining. This data demonstrates the use of this antibody for immunohistochemistry; clinical relevance has not been evaluated. BC = breast carcinoma; HC = hepatocarcinoma.



Formalin-fixed and paraffin-embedded human prostate carcinoma with CDK4 Antibody (C-term), which was peroxidase-conjugated to the secondary antibody, followed by DAB staining. This data demonstrates the use of this antibody for immunohistochemistry; clinical relevance has not been evaluated.



IF image of HeLa cell stained with CDK4 Antibody (C-term) (Cat#TA324944). HeLa cells were incubated with CDK4 primary antibody (1:25, 1 h at 37°C). For secondary antibody, Alexa Fluor® 488 conjugated donkey anti-rabbit antibody (green) was used (1:400). Cytoplasmic actin was counterstained with Alexa Fluor® 555 (red) conjugated Phalloidin (7 units/ml). CDK4 immunoreactivity is localized to Cytoplasm significantly.



CDK4 Antibody (C-term) (Cat. #TA324944) flow cytometric analysis of HL60 cells (bottom histogram) compared to a negative control cell (top histogram). FITC-conjugated goat-anti-rabbit secondary antibodies were used for the analysis.