

## Product datasheet for **TA324940S**

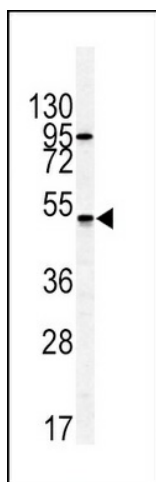
### Gastric Inhibitory Polypeptide Receptor (GIPR) Rabbit Polyclonal Antibody

#### Product data:

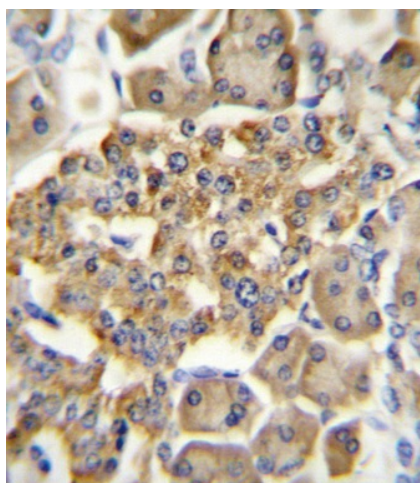
Product Type:	Primary Antibodies
Applications:	FC, IHC, WB
Recommended Dilution:	WB: 1:1000, IHC: 1:10~50, FC: 1:10~50
Reactivity:	Human
Host:	Rabbit
Isotype:	IgG
Clonality:	Polyclonal
Immunogen:	This GIPR antibody is generated from rabbits immunized with a KLH conjugated synthetic peptide between 7-38 amino acids from the N-terminal region of human GIPR.
Formulation:	Purified polyclonal antibody supplied in PBS with 0.09% (W/V) sodium azide.
Concentration:	lot specific
Purification:	This antibody is prepared by Saturated Ammonium Sulfate (SAS) precipitation followed by dialysis against PBS.
Conjugation:	Unconjugated
Storage:	Store at -20°C as received.
Stability:	Stable for 12 months from date of receipt.
Predicted Protein Size:	53157 Da
Gene Name:	gastric inhibitory polypeptide receptor
Database Link:	<a href="#">NP_000155</a> <a href="#">Entrez Gene 2696 Human</a> <a href="#">P48546</a>
Synonyms:	PGQTL2
Protein Families:	Druggable Genome, GPCR, Transmembrane
Protein Pathways:	Neuroactive ligand-receptor interaction



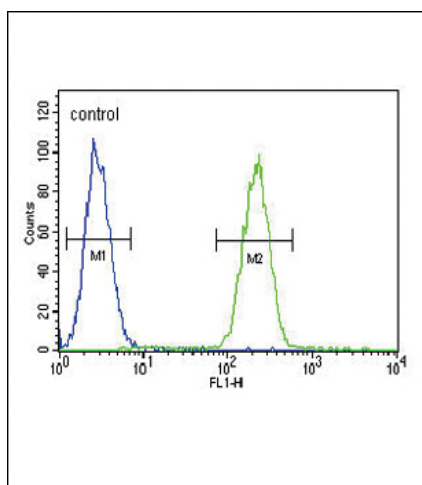
[View online »](#)

**Product images:**


Western blot analysis of GIPR antibody (N-term) (Cat.#[TA324940]) in HL60 cell line lysates (35ug/lane). GIPR (arrow) was detected using the purified Pab.



GIPR Antibody (N-term) (Cat. # [TA324940]) immunohistochemistry analysis in formalin fixed and paraffin embedded human pancreas tissue followed by peroxidase conjugation of the secondary antibody and DAB staining. This data demonstrates the use of GIPR Antibody (N-term) for immunohistochemistry. Clinical relevance has not been evaluated.



GIPR Antibody (Center) (Cat. #[TA324940]) flow cytometric analysis of MDA-MB231 cells (right histogram) compared to a negative control cell (left histogram). FITC-conjugated goat-anti-rabbit secondary antibodies were used for the analysis.