

Product datasheet for **TA324939S**

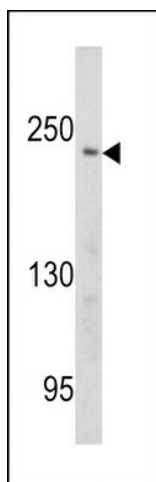
PCM1 Rabbit Polyclonal Antibody

Product data:

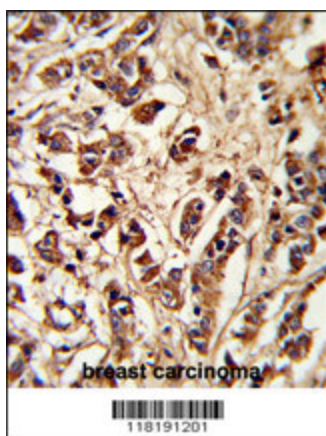
Product Type:	Primary Antibodies
Applications:	FC, IF, IHC, WB
Recommended Dilution:	IF: 1:10~50, WB: 1:1000, IHC: 1:50~100, FC: 1:10~50
Reactivity:	Human
Host:	Rabbit
Isotype:	IgG
Clonality:	Polyclonal
Immunogen:	This PCM-1 antibody is generated from rabbits immunized with a KLH conjugated synthetic peptide between 632-661 amino acids from the Central region of human PCM-1.
Formulation:	Purified polyclonal antibody supplied in PBS with 0.09% (W/V) sodium azide.
Concentration:	lot specific
Purification:	This antibody is purified through a protein A column, followed by peptide affinity purification.
Conjugation:	Unconjugated
Storage:	Store at -20°C as received.
Stability:	Stable for 12 months from date of receipt.
Predicted Protein Size:	228533 Da
Gene Name:	pericentriolar material 1
Database Link:	NP_006188 Entrez Gene 5108 Human Q15154
Synonyms:	PTC4
Protein Families:	Druggable Genome, Transcription Factors

[View online »](#)

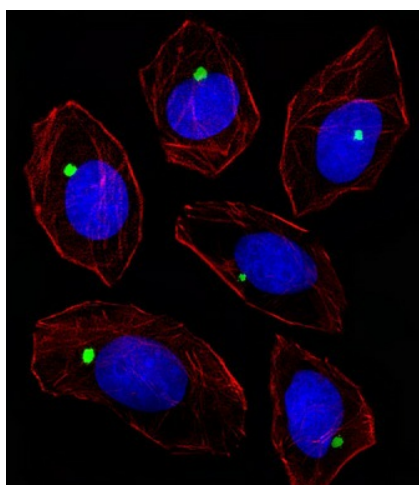
Product images:



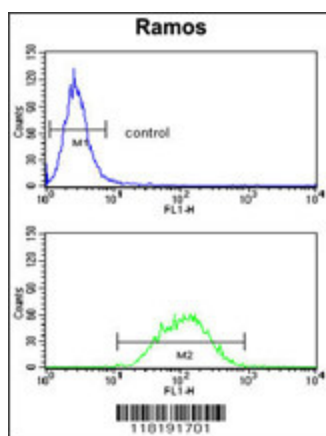
Western blot analysis of PCM-1 antibody (Center) (Cat.#[TA324939]) in Ramos cell line lysates (35ug/lane). PCM-1 (arrow) was detected using the purified Pab.



Formalin-fixed and paraffin-embedded human breast carcinoma reacted with PCM-1 Antibody (Center), which was peroxidase-conjugated to the secondary antibody, followed by DAB staining. This data demonstrates the use of this antibody for immunohistochemistry; clinical relevance has not been evaluated.



IF image of A549 cell stained with PCM-1 Antibody (Center) (Cat# [TA324939]/SA120711BC). A549 cells were incubated with PCM-1 primary antibody (1:25, 1 h at 37°C). For secondary antibody, Alexa Fluor® 488 conjugated donkey anti-rabbit antibody (green) was used (1:400). Cytoplasmic actin was counterstained with Alexa Fluor® 555 (red) conjugated Phalloidin (7 units/ml). Nuclei were counterstained with DAPI (blue). PCM-1 immunoreactivity is localized to Centrosome significantly.



PCM-1 Antibody (Center) (Cat. # [TA324939]) flow cytometry analysis of Ramos cells (bottom histogram) compared to a negative control cell (top histogram). FITC-conjugated goat-anti-rabbit secondary antibodies were used for the analysis.