

Product datasheet for **TA324938S**

Alanine Transaminase (GPT) Rabbit Polyclonal Antibody

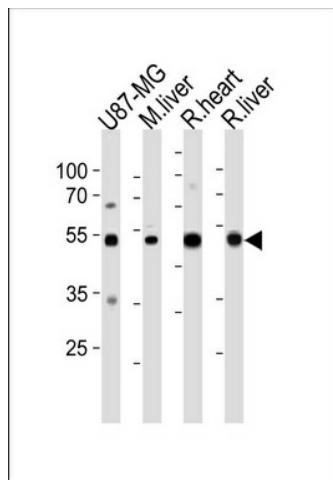
Product data:

Product Type:	Primary Antibodies
Applications:	WB
Recommended Dilution:	WB: 1:1000
Reactivity:	Human, Mouse, Rat (Predicted: Bovine)
Host:	Rabbit
Isotype:	IgG
Clonality:	Polyclonal
Immunogen:	This GPT antibody is generated from rabbits immunized with a KLH conjugated synthetic peptide between 118-144 amino acids from the N-terminal region of human GPT.
Formulation:	Purified polyclonal antibody supplied in PBS with 0.09% (W/V) sodium azide.
Concentration:	lot specific
Purification:	This antibody is prepared by Saturated Ammonium Sulfate (SAS) precipitation followed by dialysis against PBS.
Conjugation:	Unconjugated
Storage:	Store at -20°C as received.
Stability:	Stable for 12 months from date of receipt.
Predicted Protein Size:	54637 Da
Gene Name:	glutamic-pyruvate transaminase (alanine aminotransferase)
Database Link:	NP_005300 Entrez Gene 76282 Mouse Entrez Gene 81670 Rat Entrez Gene 2875 Human P24298
Synonyms:	AAT1; ALT1; GPT1
Protein Families:	Druggable Genome
Protein Pathways:	Alanine, aspartate and glutamate metabolism, Metabolic pathways



[View online »](#)

Product images:



GPT Antibody (N-term R133) (Cat. #[TA324938]) western blot analysis in U87-MG cell line, mouse liver, and rat heart and liver tissue lysates (35ug/lane). This demonstrates the GPT antibody detected the GPT protein (arrow).