

## Product datasheet for **TA324936S**

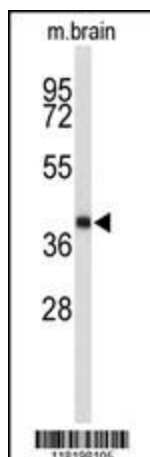
### EN2 Rabbit Polyclonal Antibody

#### Product data:

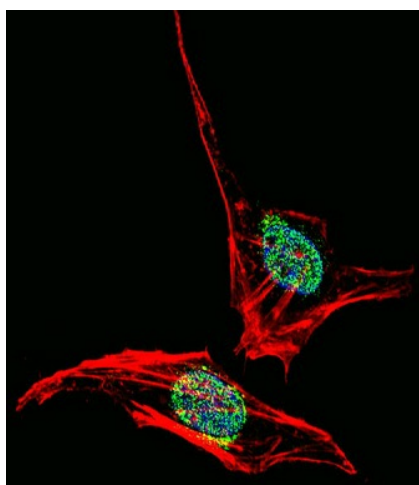
Product Type:	Primary Antibodies
Applications:	IF, WB
Recommended Dilution:	WB: 1:1000, IF: 1:10~50
Reactivity:	Human, Mouse (Predicted: Zebrafish, Chicken, Xenopus)
Host:	Rabbit
Isotype:	IgG
Clonality:	Polyclonal
Immunogen:	This EN2 antibody is generated from rabbits immunized with a KLH conjugated synthetic peptide between 243-271 amino acids from the C-terminal region of human EN2.
Formulation:	Purified polyclonal antibody supplied in PBS with 0.09% (W/V) sodium azide.
Concentration:	lot specific
Purification:	This antibody is purified through a protein A column, followed by peptide affinity purification.
Conjugation:	Unconjugated
Storage:	Store at -20°C as received.
Stability:	Stable for 12 months from date of receipt.
Predicted Protein Size:	34211 Da
Gene Name:	engrailed homeobox 2
Database Link:	<a href="#">NP_001418</a> <a href="#">Entrez Gene 13799 Mouse</a> <a href="#">Entrez Gene 2020 Human</a> <a href="#">P19622</a>
Synonyms:	AUTS1; AUTS10; engrailed-2; engrailed homeobox 2; engrailed homolog 2
Protein Families:	Druggable Genome, ES Cell Differentiation/IPS



[View online »](#)

**Product images:**

Western blot analysis of EN2 antibody (C-term) (Cat.# [TA324936]) in 293 cell line lysates and mouse stomach and lung tissue lysates (35ug/lane). EN2 (arrow) was detected using the purified Pab.



IF image of HeLa cell stained with EN2 Antibody (C-term) (Cat#[TA324936]). HeLa cells were incubated with EN2 primary antibody (1:25, 1 h at 37°C). For secondary antibody, Alexa Fluor® 488 conjugated donkey anti-rabbit antibody (green) was used (1:400). Cytoplasmic actin was counterstained with Alexa Fluor® 555 (red) conjugated Phalloidin (7 units/ml). Nuclei were counterstained with DAPI (blue). EN2 immunoreactivity is localized to nucleus significantly and Cytoplasm weakly.