

## Product datasheet for **TA324935**

### Fatty Acid Synthase (FASN) Rabbit Polyclonal Antibody

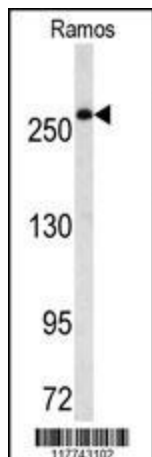
#### Product data:

Product Type:	Primary Antibodies
Applications:	FC, IF, IHC, WB
Recommended Dilution:	IF: 1:10~50, WB: 1:1000, IHC: 1:10~50, FC: 1:10~50
Reactivity:	Human
Host:	Rabbit
Isotype:	IgG
Clonality:	Polyclonal
Immunogen:	This FASN antibody is generated from rabbits immunized with a KLH conjugated synthetic peptide between 942-973 amino acids from the Central region of human FASN.
Formulation:	Purified polyclonal antibody supplied in PBS with 0.09% (W/V) sodium azide.
Concentration:	lot specific
Purification:	This antibody is prepared by Saturated Ammonium Sulfate (SAS) precipitation followed by dialysis against PBS.
Conjugation:	Unconjugated
Storage:	Store at -20°C as received.
Stability:	Stable for 12 months from date of receipt.
Predicted Protein Size:	273427 Da
Gene Name:	fatty acid synthase
Database Link:	<a href="#">NP_004095</a> <a href="#">Entrez Gene 2194 Human</a> <a href="#">P49327</a>
Synonyms:	FAS; OA-519; SDR27X1
Protein Families:	Druggable Genome
Protein Pathways:	Fatty acid biosynthesis, Insulin signaling pathway, Metabolic pathways

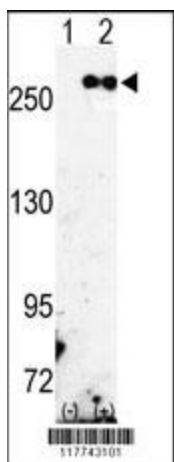


[View online »](#)

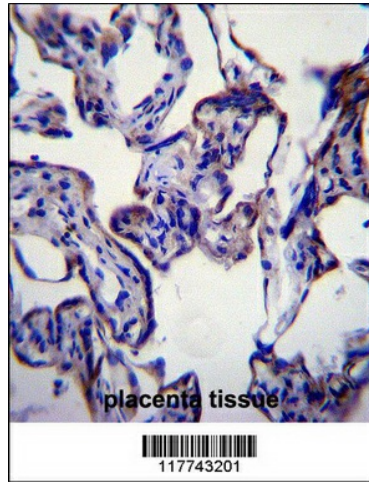
## Product images:



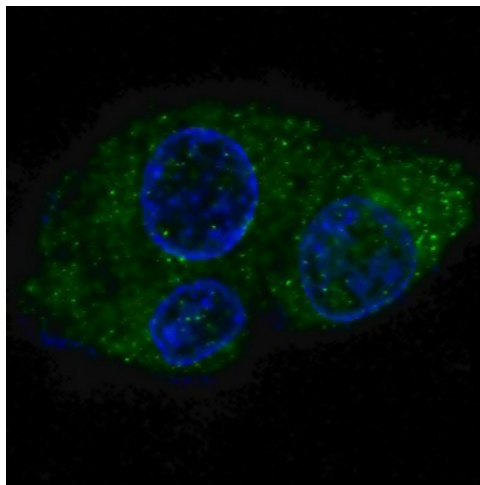
Western blot analysis of FASN Antibody (Center) (Cat. #TA324935) in Ramos cell line lysates (35ug/lane). FASN (arrow) was detected using the purified Pab.



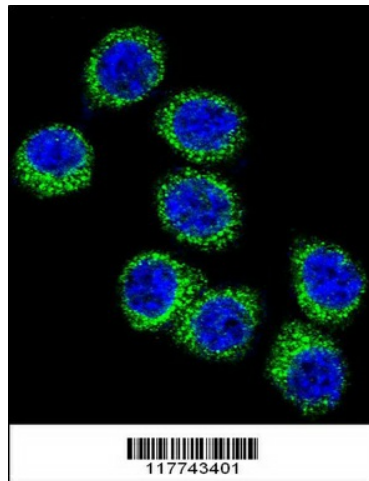
Western blot analysis of FASN (arrow) using rabbit polyclonal FASN Antibody (Center) (Cat.#TA324935). 293 cell lysates (2 ug/lane) either nontransfected (Lane 1) or transiently transfected with the FASN gene (Lane 2) (Origene Technologies).



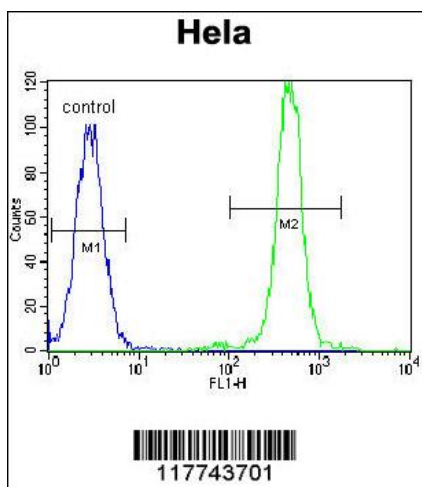
FASN Antibody (Center) (Cat. #TA324935) immunohistochemistry analysis in formalin fixed and paraffin embedded human placenta tissue followed by peroxidase conjugation of the secondary antibody and DAB staining. This data demonstrates the use of FASN Antibody (Center) for immunohistochemistry. Clinical relevance has not been evaluated.



IF image of HepG2 cells stained with FASN (Center) antibody. HepG2 cells were incubated with TA324935 FASN (Center) primary antibody (1:200, 2 h at RT). For secondary antibody, Alexa Fluor® 488 conjugated donkey anti-rabbit antibody (green) was used (1:1000, 1h). Nuclei were counterstained with Hoechst 33342 (blue). Note the highly specific localization of the FASN mainly to the cytoplasm, supported by Human Protein Atlas Data (<http://www.proteinatlas.org/ENSG00000169710>).



Confocal immunofluorescent analysis of FASN Antibody (Center) (Cat#TA324935) with HeLa cell followed by Alexa Fluor 488-conjugated goat anti-rabbit IgG (green). DAPI was used to stain the cell nuclear (blue).



FASN Antibody (Center) (Cat. #TA324935) flow cytometric analysis of HeLa cells (right histogram) compared to a negative control cell (left histogram). FITC-conjugated goat-anti-rabbit secondary antibodies were used for the analysis.