

## Product datasheet for **TA324934**

### Sprouty 4 (SPRY4) Rabbit Polyclonal Antibody

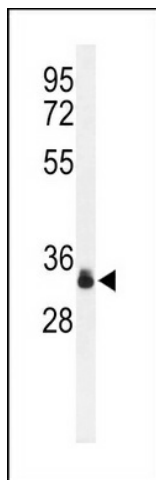
#### Product data:

Product Type:	Primary Antibodies
Applications:	FC, IHC, WB
Recommended Dilution:	WB: 1:1000, IHC: 1:10~50, FC: 1:10~50
Reactivity:	Human
Host:	Rabbit
Isotype:	IgG
Clonality:	Polyclonal
Immunogen:	This SPRY4 antibody is generated from rabbits immunized with a KLH conjugated synthetic peptide between 26-56 amino acids from human SPRY4.
Formulation:	Purified polyclonal antibody supplied in PBS with 0.09% (W/V) sodium azide.
Concentration:	lot specific
Purification:	This antibody is purified through a protein A column, followed by peptide affinity purification.
Conjugation:	Unconjugated
Storage:	Store at -20°C as received.
Stability:	Stable for 12 months from date of receipt.
Predicted Protein Size:	32541 Da
Gene Name:	sprouty RTK signaling antagonist 4
Database Link:	<a href="#">NP_112226</a> <a href="#">Entrez Gene 81848 Human</a> <a href="#">Q9C004</a>
Synonyms:	HH17
Protein Pathways:	Jak-STAT signaling pathway

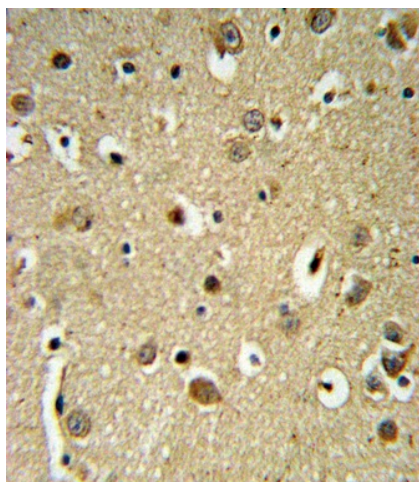


[View online »](#)

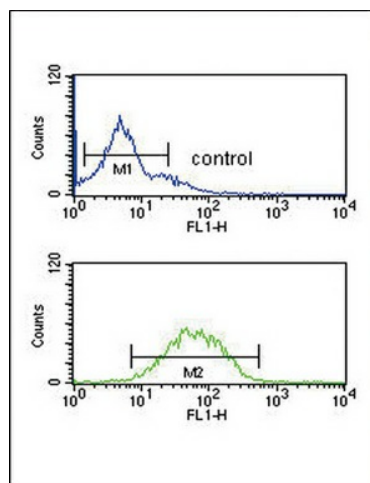
## Product images:



Western blot analysis of Phospho-SPRY4-Y75.ctrl (Cat. #TA324934) in K562 cell line lysates (35ug/lane). SPRY4 (arrow) was detected using the purified Pab.



SPRY4-Y75 Antibody (Cat. #TA324934) IHC analysis in formalin fixed and paraffin embedded brain tissue followed by peroxidase conjugation of the secondary antibody and DAB staining. This data demonstrates the use of the SPRY4-Y75 Antibody for immunohistochemistry. Clinical relevance has not been evaluated.



SPRY4-Y75 Antibody (Cat. #TA324934) flow cytometric analysis of K562 cells (bottom histogram) compared to a negative control cell (top histogram). FITC-conjugated goat-anti-rabbit secondary antibodies were used for the analysis.