

Product datasheet for **TA324931**

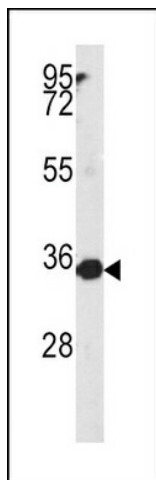
MTHFD2 Rabbit Polyclonal Antibody

Product data:

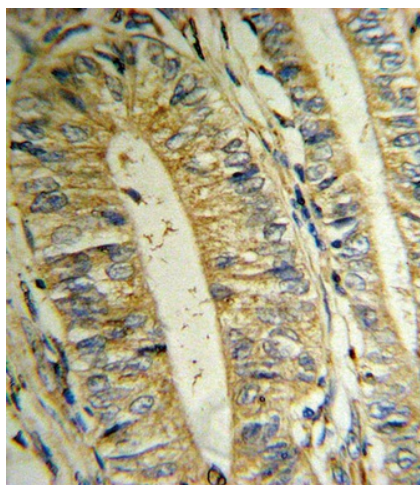
Product Type:	Primary Antibodies
Applications:	FC, IHC, WB
Recommended Dilution:	WB: 1:1000, IHC: 1:10~50, FC: 1:10~50
Reactivity:	Human
Host:	Rabbit
Isotype:	IgG
Clonality:	Polyclonal
Immunogen:	This MTHFD2 antibody is generated from rabbits immunized with a KLH conjugated synthetic peptide between 271-299 amino acids from the C-terminal region of human MTHFD2.
Formulation:	Purified polyclonal antibody supplied in PBS with 0.09% (W/V) sodium azide.
Concentration:	lot specific
Purification:	This antibody is prepared by Saturated Ammonium Sulfate (SAS) precipitation followed by dialysis against PBS.
Conjugation:	Unconjugated
Storage:	Store at -20°C as received.
Stability:	Stable for 12 months from date of receipt.
Predicted Protein Size:	37895 Da
Gene Name:	methylenetetrahydrofolate dehydrogenase (NADP+ dependent) 2, methenyltetrahydrofolate cyclohydrolase
Database Link:	NP_006627 Entrez Gene 10797 Human P13995
Synonyms:	NMDMC
Protein Families:	Druggable Genome
Protein Pathways:	Glyoxylate and dicarboxylate metabolism, Metabolic pathways, One carbon pool by folate



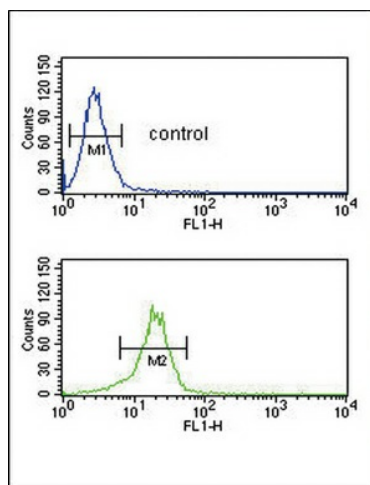
[View online »](#)

Product images:

Western blot analysis of MTHFD2 antibody (C-term) (Cat.# TA324931) in NCI-H460 cell line lysates (35ug/lane). MTHFD2 (arrow) was detected using the purified Pab.



Formalin-fixed and paraffin-embedded human Colon carcinoma reacted with MTHFD2 Antibody (C-term), which was peroxidase-conjugated to the secondary antibody, followed by DAB staining. This data demonstrates the use of this antibody for immunohistochemistry; clinical relevance has not been evaluated.



MTHFD2 Antibody (C-term) (Cat. #TA324931) flow cytometric analysis of NCI-H460 cells (bottom histogram) compared to a negative control cell (top histogram). FITC-conjugated goat-anti-rabbit secondary antibodies were used for the analysis.