

## Product datasheet for **TA324930S**

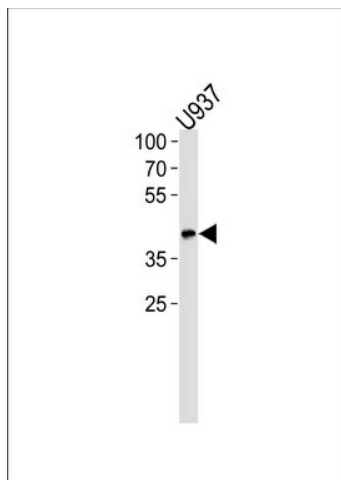
### Apolipoprotein L 1 (APOL1) Rabbit Polyclonal Antibody

#### Product data:

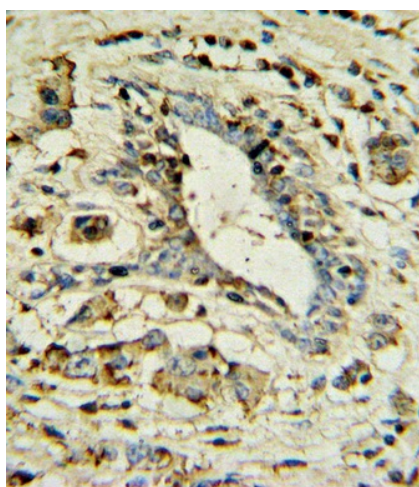
Product Type:	Primary Antibodies
Applications:	FC, IHC, WB
Recommended Dilution:	WB: 1:1000, IHC: 1:10~50, FC: 1:10~50
Reactivity:	Human
Host:	Rabbit
Isotype:	IgG
Clonality:	Polyclonal
Immunogen:	This APOL1 antibody is generated from rabbits immunized with a KLH conjugated synthetic peptide between 137-171 amino acids from human APOL1.
Formulation:	Purified polyclonal antibody supplied in PBS with 0.09% (W/V) sodium azide.
Concentration:	lot specific
Purification:	This antibody is prepared by Saturated Ammonium Sulfate (SAS) precipitation followed by dialysis against PBS.
Conjugation:	Unconjugated
Storage:	Store at -20°C as received.
Stability:	Stable for 12 months from date of receipt.
Predicted Protein Size:	43974 Da
Gene Name:	apolipoprotein L1
Database Link:	<a href="#">NP_001130012</a> <a href="#">Entrez Gene 8542 Human</a> <a href="#">O14791</a>
Synonyms:	APO-L; APOL; APOL-I; FSGS4
Protein Families:	Secreted Protein, Transmembrane



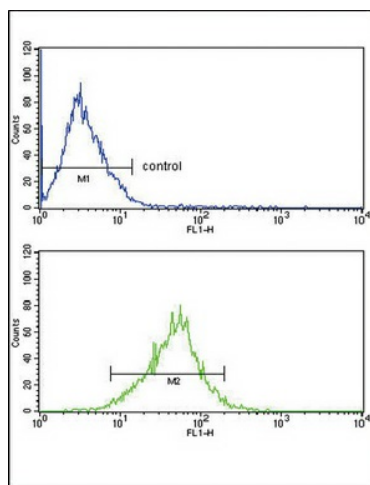
[View online »](#)

**Product images:**

APOL1-BH3 Domain Antibody (Cat. #[TA324930]) western blot analysis in U937 cell line lysates (35ug/lane). This demonstrates the APOL1-BH3 Domain antibody detected the APOL1-BH3 Domain protein (arrow).



APOL1 Antibody (Cat. #[TA324930]) IHC analysis in formalin fixed and paraffin embedded human breast carcinoma followed by peroxidase conjugation of the secondary antibody and DAB staining. This data demonstrates the use of the APOL1 Antibody for immunohistochemistry. Clinical relevance has not been evaluated.



APOL1 Antibody (19169) FC analysis of MCF-7 cells (bottom histogram) compared to a negative control cell (top histogram). FITC-conjugated goat-anti-rabbit secondary antibodies were used for the analysis.