

## Product datasheet for **TA324929**

### **NQO1 Rabbit Polyclonal Antibody**

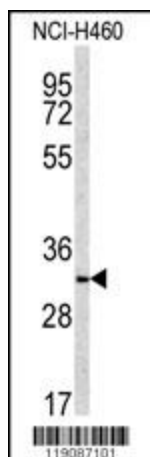
#### **Product data:**

<b>Product Type:</b>	Primary Antibodies
<b>Applications:</b>	FC, IF, WB
<b>Recommended Dilution:</b>	WB: 1:1000, FC: 1:10~50, IF: 1:10~50
<b>Reactivity:</b>	Human
<b>Host:</b>	Rabbit
<b>Isotype:</b>	IgG
<b>Clonality:</b>	Polyclonal
<b>Immunogen:</b>	This NQO1 antibody is generated from rabbits immunized with a KLH conjugated synthetic peptide between 118-144 amino acids from the Central region of human NQO1.
<b>Formulation:</b>	Purified polyclonal antibody supplied in PBS with 0.09% (W/V) sodium azide.
<b>Concentration:</b>	lot specific
<b>Purification:</b>	This antibody is prepared by Saturated Ammonium Sulfate (SAS) precipitation followed by dialysis against PBS.
<b>Conjugation:</b>	Unconjugated
<b>Storage:</b>	Store at -20°C as received.
<b>Stability:</b>	Stable for 12 months from date of receipt.
<b>Predicted Protein Size:</b>	30868 Da
<b>Gene Name:</b>	NAD(P)H quinone dehydrogenase 1
<b>Database Link:</b>	<a href="#">NP_000894</a> <a href="#">Entrez Gene 1728 Human</a> <a href="#">P15559</a>
<b>Synonyms:</b>	DHQU; DIA4; DTD; NMOR1; NMORI; QR1
<b>Protein Families:</b>	Druggable Genome

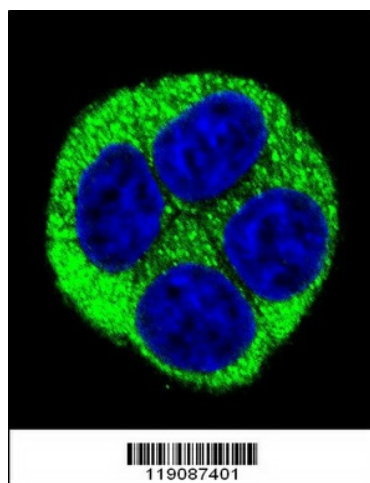


[View online »](#)

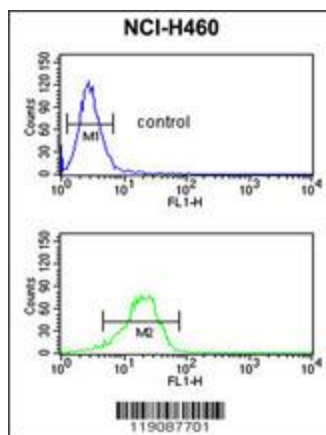
## Product images:



Western blot analysis of NQO1 antibody (Center) (Cat.#TA324929) in NCI-H460 cell line lysates (35ug/lane). NQO1 (arrow) was detected using the purified Pab.



Confocal immunofluorescent analysis of NQO1 Antibody (Center) (Cat#TA324929) with Hela cell followed by Alexa Fluor 488-conjugated goat anti-rabbit IgG (green). DAPI was used to stain the cell nuclear (blue).



NQO1 antibody (Center) (Cat.#TA324929) flow cytometric analysis of NCI-H460 cells (bottom histogram) compared to a negative control cell (top histogram). FITC-conjugated goat-anti-rabbit secondary antibodies were used for the analysis.