

## Product datasheet for **TA324928**

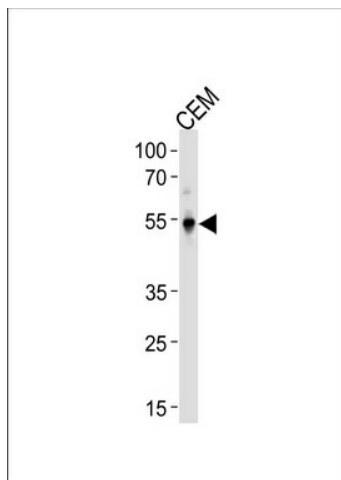
### **KLF5 Rabbit Polyclonal Antibody**

#### **Product data:**

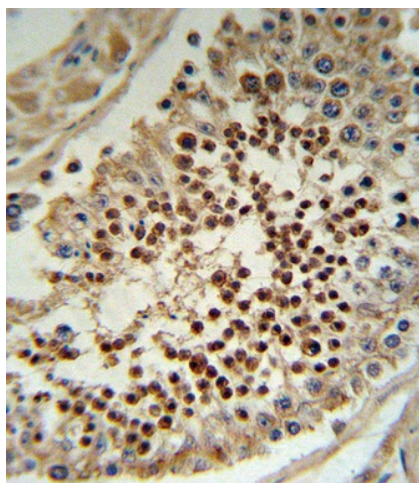
<b>Product Type:</b>	Primary Antibodies
<b>Applications:</b>	FC, IF, IHC, WB
<b>Recommended Dilution:</b>	WB: 1:1000, IF: 1:10~50, IHC: 1:10~50, FC: 1:10~50
<b>Reactivity:</b>	Human (Predicted: Mouse)
<b>Host:</b>	Rabbit
<b>Isotype:</b>	IgG
<b>Clonality:</b>	Polyclonal
<b>Immunogen:</b>	This KLF5 antibody is generated from rabbits immunized with a KLH conjugated synthetic peptide between 341-370 amino acids from the C-terminal region of human KLF5.
<b>Formulation:</b>	Purified polyclonal antibody supplied in PBS with 0.09% (W/V) sodium azide.
<b>Concentration:</b>	lot specific
<b>Purification:</b>	This antibody is prepared by Saturated Ammonium Sulfate (SAS) precipitation followed by dialysis against PBS.
<b>Conjugation:</b>	Unconjugated
<b>Storage:</b>	Store at -20°C as received.
<b>Stability:</b>	Stable for 12 months from date of receipt.
<b>Predicted Protein Size:</b>	50792 Da
<b>Gene Name:</b>	Kruppel-like factor 5 (intestinal)
<b>Database Link:</b>	<a href="#">NP_001721</a> <a href="#">Entrez Gene 12224 Mouse</a> <a href="#">Entrez Gene 688 Human</a> <a href="#">Q13887</a>
<b>Synonyms:</b>	BTEB2; CKLF; IKLF
<b>Protein Families:</b>	Embryonic stem cells, ES Cell Differentiation/IPS, Induced pluripotent stem cells, Transcription Factors



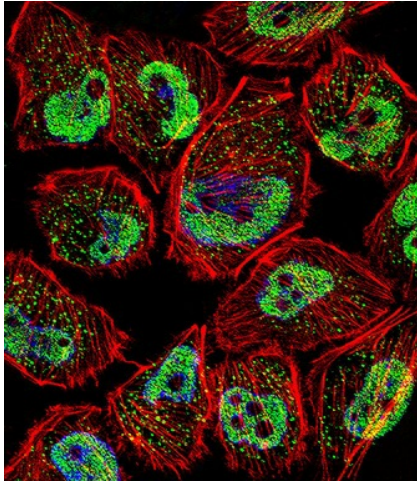
[View online »](#)

**Product images:**

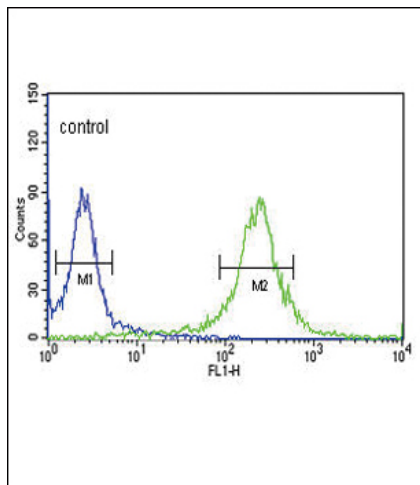
KLF5 Antibody (C-term) (Cat. #TA324928) western blot analysis in CEM cell line lysates (35ug/lane). This demonstrates the KLF5 antibody detected the KLF5 protein (arrow).



KLF5 Antibody (C-term) (Cat.#TA324928) IHC analysis in formalin fixed and paraffin embedded human testis tissue followed by peroxidase conjugation of the secondary antibody and DAB staining. This data demonstrates the use of the KLF5 Antibody (C-term) for immunohistochemistry. Clinical relevance has not been evaluated.



IF image of U251 cell stained with KLF5 Antibody (C-term) (Cat#TA324928). U251 cells were incubated with KLF5 primary antibody (1:25, 1 h at 37°C). For secondary antibody, Alexa Fluor® 488 conjugated donkey anti-rabbit antibody (green) was used (1:400). Cytoplasmic actin was counterstained with Alexa Fluor® 555 (red) conjugated Phalloidin (7 units/ml). Nuclei were counterstained with DAPI (blue). KLF5 immunoreactivity is localized to vesicles and Nucleus significantly.



KLF5 Antibody (C-term) (Cat. #TA324928) flow cytometric analysis of HeLa cells (right histogram) compared to a negative control cell (left histogram). FITC-conjugated goat-anti-rabbit secondary antibodies were used for the analysis.