

Product datasheet for TA324925S

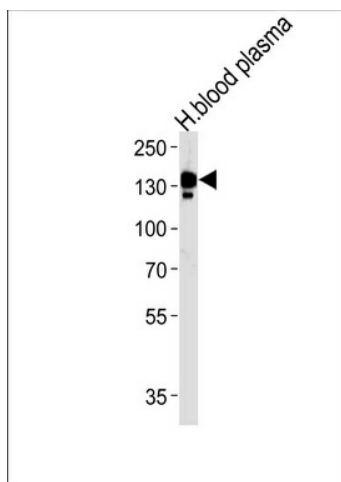
Ceruloplasmin (CP) Rabbit Polyclonal Antibody

Product data:

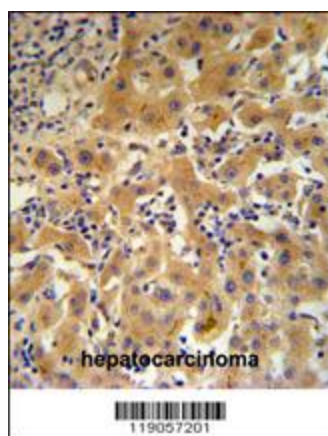
| | |
|-------------------------|--|
| Product Type: | Primary Antibodies |
| Applications: | FC, IHC, WB |
| Recommended Dilution: | WB: 1:1000, IHC: 1:50~100, FC: 1:10~50 |
| Reactivity: | Human, Mouse |
| Host: | Rabbit |
| Isotype: | IgG |
| Clonality: | Polyclonal |
| Immunogen: | This CP antibody is generated from rabbits immunized with a KLH conjugated synthetic peptide between 121-151 amino acids from the N-terminal region of human CP. |
| Formulation: | Purified polyclonal antibody supplied in PBS with 0.09% (W/V) sodium azide. |
| Concentration: | lot specific |
| Purification: | This antibody is prepared by Saturated Ammonium Sulfate (SAS) precipitation followed by dialysis against PBS. |
| Conjugation: | Unconjugated |
| Storage: | Store at -20°C as received. |
| Stability: | Stable for 12 months from date of receipt. |
| Predicted Protein Size: | 122205 Da |
| Gene Name: | ceruloplasmin (ferroxidase) |
| Database Link: | NP_000087 Entrez Gene 12870 Mouse Entrez Gene 1356 Human P00450 |
| Synonyms: | CP-2 |
| Protein Families: | Druggable Genome |
| Protein Pathways: | Porphyrin and chlorophyll metabolism |


[View online »](#)

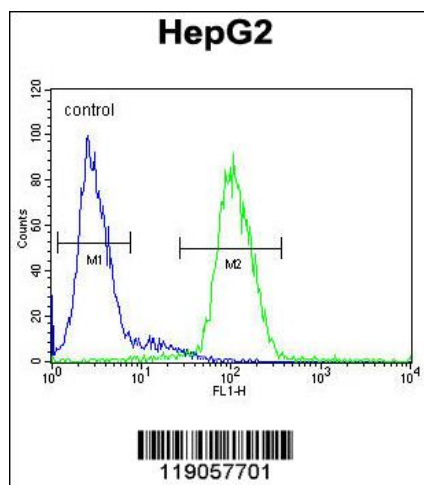
Product images:



CP Antibody (N-term) (Cat.# [TA324925]) western blot analysis in human blood plasma tissue lysates (35ug/lane). This demonstrates the CP antibody detected the CP protein (arrow).



CP Antibody (N-term) (Cat.#[TA324925]) IHC analysis in formalin fixed and paraffin embedded human hepatocarcinoma followed by peroxidase conjugation of the secondary antibody and DAB staining. This data demonstrates the use of the CP Antibody (N-term) for immunohistochemistry. Clinical relevance has not been evaluated.



CP Antibody (N-term) (Cat. #[TA324925]) flow cytometric analysis of HepG2 cells (right histogram) compared to a negative control cell (left histogram). FITC-conjugated goat-anti-rabbit secondary antibodies were used for the analysis.