

## Product datasheet for **TA324924S**

### CD10 (MME) Rabbit Polyclonal Antibody

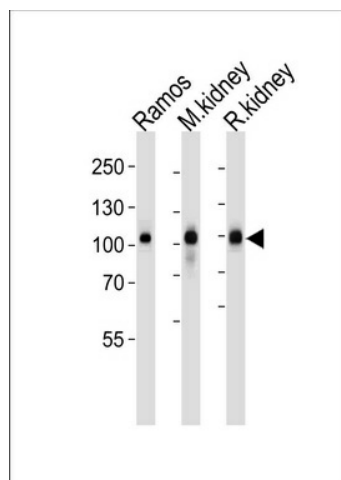
#### Product data:

Product Type:	Primary Antibodies
Applications:	IF, WB
Recommended Dilution:	WB: 1:1000, IF: 1:10~50
Reactivity:	Human, Mouse (Predicted: Rat)
Host:	Rabbit
Isotype:	IgG
Clonality:	Polyclonal
Immunogen:	This MME antibody is generated from rabbits immunized with a KLH conjugated synthetic peptide between 274-302 amino acids from the Central region of human MME.
Formulation:	Purified polyclonal antibody supplied in PBS with 0.09% (W/V) sodium azide.
Concentration:	lot specific
Purification:	This antibody is prepared by Saturated Ammonium Sulfate (SAS) precipitation followed by dialysis against PBS.
Conjugation:	Unconjugated
Storage:	Store at -20°C as received.
Stability:	Stable for 12 months from date of receipt.
Predicted Protein Size:	85514 Da
Gene Name:	membrane metallo-endopeptidase
Database Link:	<a href="#">NP_000893</a> <a href="#">Entrez Gene 17380 Mouse</a> <a href="#">Entrez Gene 24590 Rat</a> <a href="#">Entrez Gene 4311 Human</a> <a href="#">P08473</a>
Synonyms:	CALLA; CD10; CMT2T; NEP; SCA43; SFE
Protein Families:	Druggable Genome, Protease, Transmembrane
Protein Pathways:	Alzheimer's disease, Hematopoietic cell lineage, Renin-angiotensin system

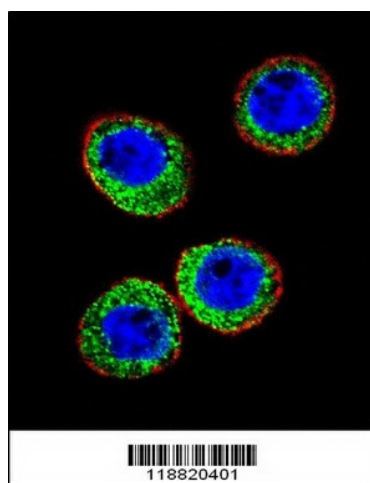


[View online »](#)

## Product images:



Western blot analysis of lysates from Ramos cell line, mouse kidney and rat kidney tissue (from left to right), using Neprilysin Antibody (Center) (Cat. #[TA324924]).[TA324924] was diluted at 1:1000 at each lane. A goat anti-rabbit IgG H&L (HRP) at 1:5000 dilution was used as the secondary antibody. Lysates at 35ug per lane.



Confocal immunofluorescent analysis of MME Antibody (Center) (Cat#[TA324924]) with WiDr cell followed by Alexa Fluor 488-conjugated goat anti-rabbit IgG (green). Actin filaments have been labeled with Alexa Fluor 555 phalloidin (red). DAPI was used to stain the cell nuclear (blue).