

## Product datasheet for **TA324923**

### CD10 (MME) Rabbit Polyclonal Antibody

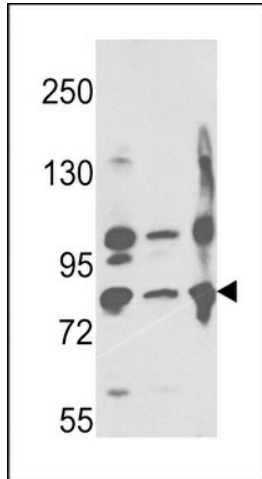
#### Product data:

Product Type:	Primary Antibodies
Applications:	FC, IHC, WB
Recommended Dilution:	WB: 1:1000, IHC: 1:50~100, FC: 1:10~50
Reactivity:	Human (Predicted: Mouse, Rat, Rabbit)
Host:	Rabbit
Isotype:	IgG
Clonality:	Polyclonal
Immunogen:	This Neprilysin antibody is generated from rabbits immunized with a KLH conjugated synthetic peptide between 506-534 amino acids from the C-terminal region of human Neprilysin.
Formulation:	Purified polyclonal antibody supplied in PBS with 0.09% (W/V) sodium azide.
Concentration:	lot specific
Purification:	This antibody is purified through a protein A column, followed by peptide affinity purification.
Conjugation:	Unconjugated
Storage:	Store at -20°C as received.
Stability:	Stable for 12 months from date of receipt.
Predicted Protein Size:	85514 Da
Gene Name:	membrane metallo-endopeptidase
Database Link:	<a href="#">NP_000893</a> <a href="#">Entrez Gene 17380 Mouse</a> <a href="#">Entrez Gene 24590 Rat</a> <a href="#">Entrez Gene 4311 Human</a> <a href="#">P08473</a>
Synonyms:	CALLA; CD10; CMT2T; NEP; SCA43; SFE
Protein Families:	Druggable Genome, Protease, Transmembrane
Protein Pathways:	Alzheimer's disease, Hematopoietic cell lineage, Renin-angiotensin system

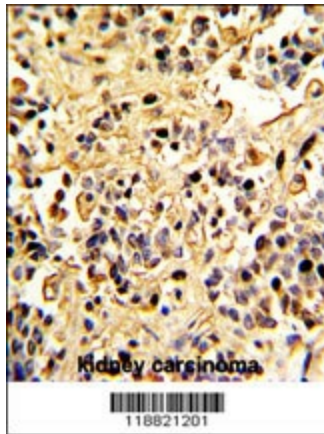


[View online »](#)

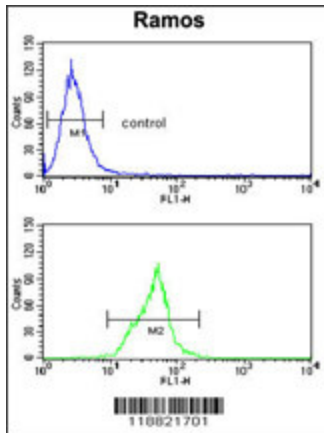
Product images:



Western blot analysis of Neprilysin Antibody (C-term) (Cat. #TA324923) in A2058, A375, Ramos cell line lysates (35ug/lane). EPN (arrow) was detected using the purified Pab.



Formalin-fixed and paraffin-embedded human kidney carcinoma with Neprilysin Antibody (C-term), which was peroxidase-conjugated to the secondary antibody, followed by DAB staining. This data demonstrates the use of this antibody for immunohistochemistry; clinical relevance has not been evaluated.



Neprilysin Antibody (C-term) (Cat. #TA324923) flow cytometry analysis of Ramos cells (bottom histogram) compared to a negative control cell (top histogram). FITC-conjugated goat-anti-rabbit secondary antibodies were used for the analysis.