

Product datasheet for **TA324922S**

Fibrinogen gamma chain (FGG) Rabbit Polyclonal Antibody

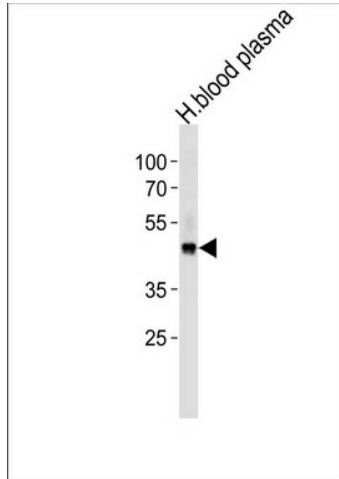
Product data:

| | |
|-------------------------|--|
| Product Type: | Primary Antibodies |
| Applications: | FC, IHC, WB |
| Recommended Dilution: | WB: 1:1000, IHC: 1:50~100, FC: 1:10~50 |
| Reactivity: | Human |
| Host: | Rabbit |
| Isotype: | IgG |
| Clonality: | Polyclonal |
| Immunogen: | This FGG antibody is generated from rabbits immunized with a KLH conjugated synthetic peptide between 417-445 amino acids from the C-terminal region of human FGG. |
| Formulation: | Purified polyclonal antibody supplied in PBS with 0.09% (W/V) sodium azide. |
| Concentration: | lot specific |
| Purification: | This antibody is prepared by Saturated Ammonium Sulfate (SAS) precipitation followed by dialysis against PBS. |
| Conjugation: | Unconjugated |
| Storage: | Store at -20°C as received. |
| Stability: | Stable for 12 months from date of receipt. |
| Predicted Protein Size: | 51512 Da |
| Gene Name: | fibrinogen gamma chain |
| Database Link: | NP_000500 Entrez Gene 2266 Human P02679 |
| Synonyms: | fibrinogen; fibrinogen gamma chain; gamma chain; gamma polypeptide |
| Protein Families: | Druggable Genome, Secreted Protein, Transmembrane |
| Protein Pathways: | Complement and coagulation cascades |

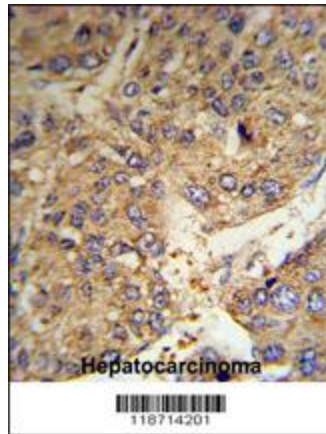


[View online »](#)

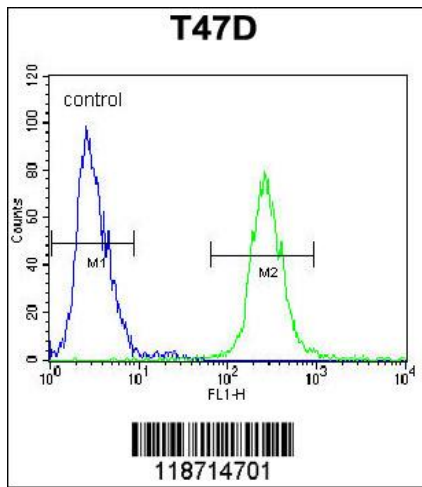
Product images:



FGG Antibody (C-term) (Cat. #[TA324922]) western blot analysis in human blood plasma cell line lysates (35ug/lane). This demonstrates the FGG antibody detected the FGG protein (arrow).



FGG Antibody (C-term) (RB18714) IHC analysis in formalin fixed and paraffin embedded human hepatocarcinoma tissue followed by peroxidase conjugation of the secondary antibody and DAB staining. This data demonstrates the use of the FGG Antibody (C-term) for immunohistochemistry. Clinical relevance has not been evaluated.



FGG Antibody (C-term) (Cat. #[TA324922]) flow cytometric analysis of T47D cells (right histogram) compared to a negative control cell (left histogram). FITC-conjugated goat-anti-rabbit secondary antibodies were used for the analysis.