

Product datasheet for **TA324921S**

Fibrinogen gamma chain (FGG) Rabbit Polyclonal Antibody

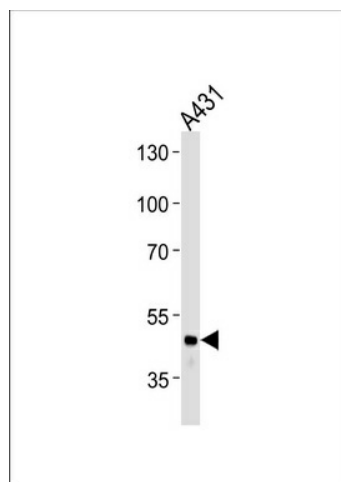
Product data:

Product Type:	Primary Antibodies
Applications:	FC, IF, WB
Recommended Dilution:	WB: 1:1000, FC: 1:10~50, IF: 1:10~50
Reactivity:	Human
Host:	Rabbit
Isotype:	IgG
Clonality:	Polyclonal
Immunogen:	This FGG antibody is generated from rabbits immunized with a KLH conjugated synthetic peptide between 91-118 amino acids from the N-terminal region of human FGG.
Formulation:	Purified polyclonal antibody supplied in PBS with 0.09% (W/V) sodium azide.
Concentration:	lot specific
Purification:	This antibody is prepared by Saturated Ammonium Sulfate (SAS) precipitation followed by dialysis against PBS.
Conjugation:	Unconjugated
Storage:	Store at -20°C as received.
Stability:	Stable for 12 months from date of receipt.
Predicted Protein Size:	51512 Da
Gene Name:	fibrinogen gamma chain
Database Link:	NP_000500 Entrez Gene 2266 Human P02679
Synonyms:	fibrinogen; fibrinogen gamma chain; gamma chain; gamma polypeptide
Protein Families:	Druggable Genome, Secreted Protein, Transmembrane
Protein Pathways:	Complement and coagulation cascades

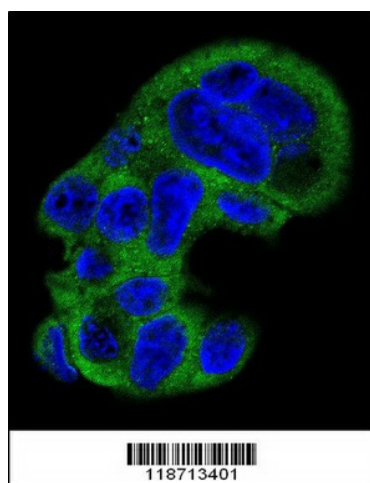


[View online »](#)

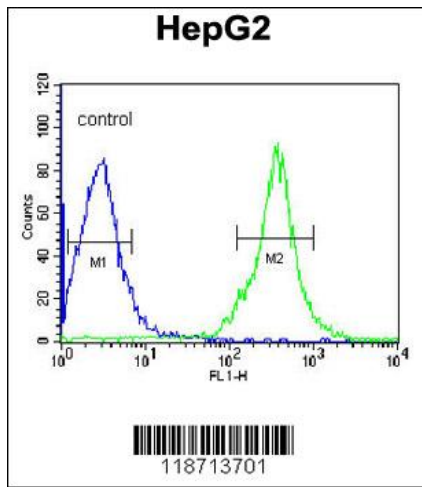
Product images:



FGG Antibody (N-term) (Cat. #[TA324921]) western blot analysis in A431 cell line lysates (35ug/lane). This demonstrates the FGG antibody detected the FGG protein (arrow).



Confocal immunofluorescent analysis of FGG Antibody (N-term) (Cat#[TA324921]) with HepG2 cell followed by Alexa Fluor 488-conjugated goat anti-rabbit IgG (green). DAPI was used to stain the cell nuclear (blue).



FGG Antibody (N-term) (Cat. #[TA324921]) flow cytometric analysis of HepG2 cells (right histogram) compared to a negative control cell (left histogram). FITC-conjugated goat-anti-rabbit secondary antibodies were used for the analysis.