

Product datasheet for **TA324920S**

DNA Polymerase epsilon (POLE3) Rabbit Polyclonal Antibody

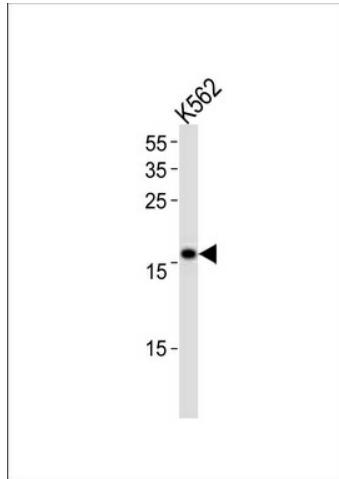
Product data:

Product Type:	Primary Antibodies
Applications:	FC, WB
Recommended Dilution:	WB: 1:1000, FC: 1:10~50
Reactivity:	Human (Predicted: Mouse, Rat, Bovine)
Host:	Rabbit
Isotype:	IgG
Clonality:	Polyclonal
Immunogen:	This POLE3 antibody is generated from rabbits immunized with a KLH conjugated synthetic peptide between 5-34 amino acids from the N-terminal region of human POLE3.
Formulation:	Purified polyclonal antibody supplied in PBS with 0.09% (W/V) sodium azide.
Concentration:	lot specific
Purification:	This antibody is prepared by Saturated Ammonium Sulfate (SAS) precipitation followed by dialysis against PBS.
Conjugation:	Unconjugated
Storage:	Store at -20°C as received.
Stability:	Stable for 12 months from date of receipt.
Predicted Protein Size:	16860 Da
Gene Name:	polymerase (DNA) epsilon 3, accessory subunit
Database Link:	NP_059139 Entrez Gene 59001 Mouse Entrez Gene 298098 Rat Entrez Gene 54107 Human Q9NRF9
Synonyms:	CHARAC17; CHRAC17; p17; YBL1
Protein Pathways:	Base excision repair, DNA replication, Metabolic pathways, Nucleotide excision repair, Purine metabolism, Pyrimidine metabolism

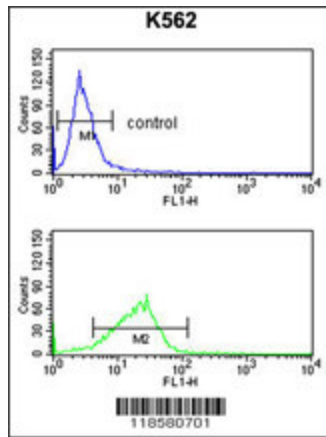


[View online »](#)

Product images:



POLE3 Antibody (N-term) (Cat. #[TA324920]) western blot analysis in K562 cell line lysates (35ug/lane). This demonstrates the POLE3 antibody detected the POLE3 protein (arrow).



POLE3 Antibody (N-term) (Cat. #[TA324920]) flow cytometry analysis of K562 cells (bottom histogram) compared to a negative control cell (top histogram). FITC-conjugated goat-anti-rabbit secondary antibodies were used for the analysis.