

Product datasheet for **TA324917S**

Carbonic Anhydrase II (CA2) Rabbit Polyclonal Antibody

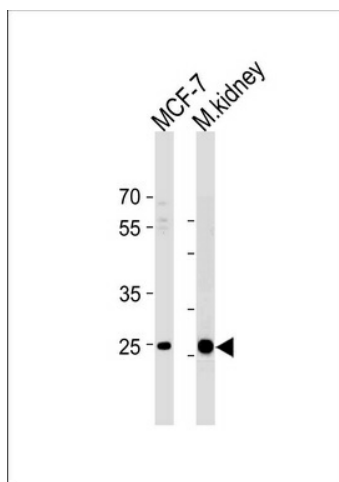
Product data:

Product Type:	Primary Antibodies
Applications:	IF, WB
Recommended Dilution:	WB: 1:1000, IF: 1:10~50
Reactivity:	Human, Mouse
Host:	Rabbit
Isotype:	IgG
Clonality:	Polyclonal
Immunogen:	This CA2 antibody is generated from rabbits immunized with a KLH conjugated synthetic peptide between 54-83 amino acids from the N-terminal region of human CA2.
Formulation:	Purified polyclonal antibody supplied in PBS with 0.09% (W/V) sodium azide.
Concentration:	lot specific
Purification:	This antibody is prepared by Saturated Ammonium Sulfate (SAS) precipitation followed by dialysis against PBS.
Conjugation:	Unconjugated
Storage:	Store at -20°C as received.
Stability:	Stable for 12 months from date of receipt.
Predicted Protein Size:	29246 Da
Gene Name:	carbonic anhydrase 2
Database Link:	NP_000058 Entrez Gene 760 Human P00918
Synonyms:	CA-II; CAC; CAII; Car2; HEL-76; HEL-S-282
Protein Families:	Druggable Genome
Protein Pathways:	Nitrogen metabolism

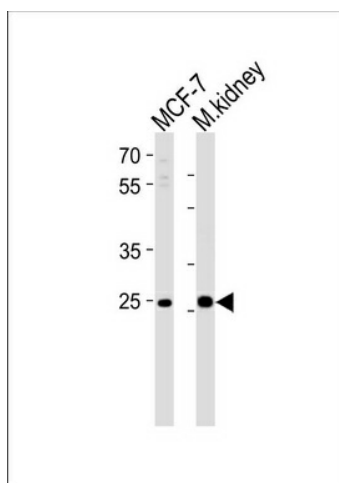


[View online »](#)

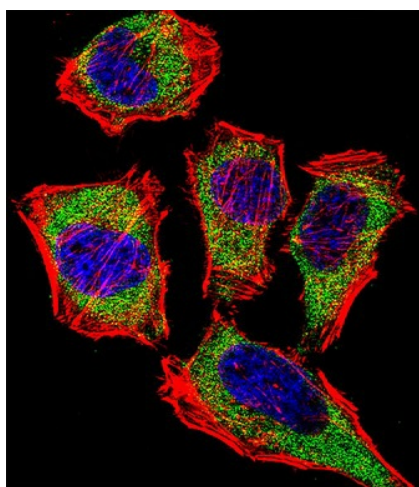
Product images:



CA2 Antibody (N-term) (Cat.# [TA324917]) western blot analysis in MCF-7 cell line and mouse kidney tissue lysates (35ug/lane). This demonstrates the CA2 antibody detected the CA2 protein (arrow).



Western blot analysis of lysates from MCF-7 cell line and mouse kidney tissue lysate (from left to right), using CA2 Antibody (N-term) (Cat. # [TA324917]). [TA324917] was diluted at 1:1000 at each lane. A goat anti-rabbit IgG H&L (HRP) at 1:5000 dilution was used as the secondary antibody. Lysates at 35ug per lane.



IF image of HeLa cell stained with CA2 Antibody (N-term) (Cat#[TA324917]). HeLa cells were incubated with CA2 primary antibody (1:25, 1 h at 37°C). For secondary antibody, Alexa Fluor® 488 conjugated donkey anti-rabbit antibody (green) was used (1:400). Cytoplasmic actin was counterstained with Alexa Fluor® 555 (red) conjugated Phalloidin (7 units/ml). Nuclei were counterstained with DAPI (blue). CA2 immunoreactivity is localized to Cytoplasm significantly.