

## Product datasheet for **TA324916S**

### EN1 Rabbit Polyclonal Antibody

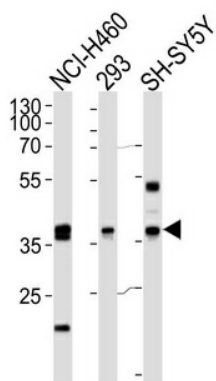
#### Product data:

Product Type:	Primary Antibodies
Applications:	IF, IHC, WB
Recommended Dilution:	IF: 1:10~50, WB: 1:1000, IHC: 1:10~50
Reactivity:	Human
Host:	Rabbit
Isotype:	IgG
Clonality:	Polyclonal
Immunogen:	This EN1 (Engrailed 1) antibody is generated from rabbits immunized with a KLH conjugated synthetic peptide between 1-30 amino acids from the N-terminal region of human EN1 (Engrailed 1).
Formulation:	Purified polyclonal antibody supplied in PBS with 0.09% (W/V) sodium azide.
Concentration:	lot specific
Purification:	This antibody is purified through a protein A column, followed by peptide affinity purification.
Conjugation:	Unconjugated
Storage:	Store at -20°C as received.
Stability:	Stable for 12 months from date of receipt.
Predicted Protein Size:	40115 Da
Gene Name:	engrailed homeobox 1
Database Link:	<a href="#">NP_001417</a> <a href="#">Entrez Gene 2019 Human</a> <a href="#">Q05925</a>
Synonyms:	engrailed homeobox 1; engrailed homolog 1; OTTHUMP00000162091
Protein Families:	Druggable Genome, ES Cell Differentiation/IPS

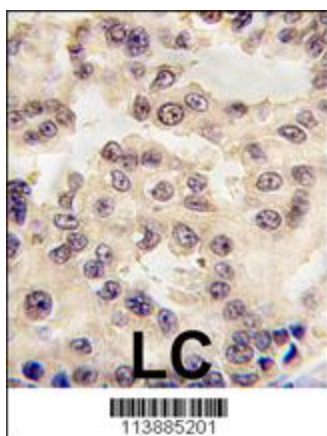


[View online »](#)

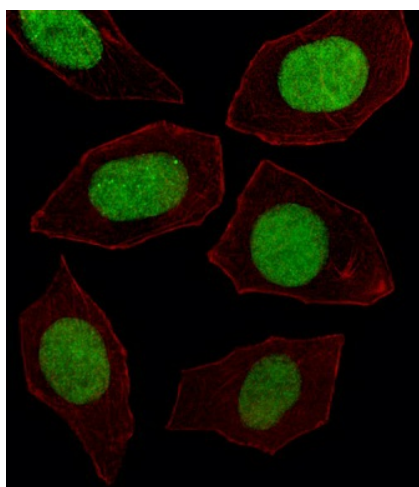
## Product images:



Western blot analysis of lysates from NCI-H460, 293, SH-SY5Y cell line (from left to right), using EN1 Antibody (N-term) (Cat. #[TA324916]). [TA324916] was diluted at 1:1000 at each lane. A goat anti-rabbit IgG H&L (HRP) at 1:5000 dilution was used as the secondary antibody. Lysates at 35ug per lane.



Formalin-fixed and paraffin-embedded human lung carcinoma tissue reacted with EN1 antibody (N-term) (Cat.#[TA324916]), which was peroxidase-conjugated to the secondary antibody, followed by DAB staining. This data demonstrates the use of this antibody for immunohistochemistry; clinical relevance has not been evaluated.



IF image of U251 cell stained with EN1 Antibody (N-term) (Cat#[TA324916]). U251 cells were incubated with EN1 primary antibody (1:25, 1 h at 37°C). For secondary antibody, Alexa Fluor® 488 conjugated donkey anti-rabbit antibody (green) was used (1:400). Cytoplasmic actin was counterstained with Alexa Fluor® 555 (red) conjugated Phalloidin (7 units/ml). EN1 immunoreactivity is localized to Nucleus significantly.