

## Product datasheet for **TA324915**

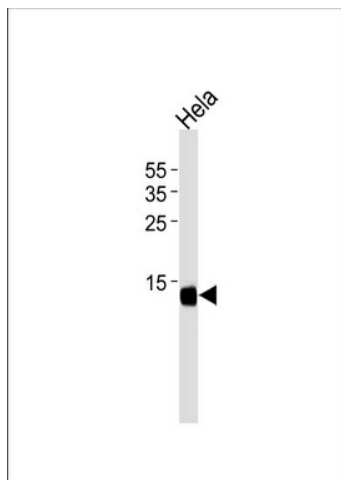
### CDA Mouse Monoclonal Antibody [Clone ID: 921CT14.2.1]

#### Product data:

Product Type:	Primary Antibodies
Clone Name:	921CT14.2.1
Applications:	WB
Recommended Dilution:	WB: 1:5000
Reactivity:	Human
Host:	Mouse
Isotype:	IgG1
Clonality:	Monoclonal
Immunogen:	Purified His-tagged CDA protein was used to produced this monoclonal antibody.
Formulation:	Mouse monoclonal antibody supplied in crude ascites with 0.09% (W/V) sodium azide.
Concentration:	lot specific
Conjugation:	Unconjugated
Storage:	Store at -20°C as received.
Stability:	Stable for 12 months from date of receipt.
Predicted Protein Size:	16185 Da
Gene Name:	cytidine deaminase
Database Link:	<a href="#">NP_001776</a> <a href="#">Entrez Gene 978 Human</a> <a href="#">P32320</a>
Synonyms:	CDD
Protein Families:	Stem cell - Pluripotency
Protein Pathways:	Drug metabolism - other enzymes, Metabolic pathways, Pyrimidine metabolism



[View online »](#)

**Product images:**

CDA Antibody (Center) (Cat. #TA324915) western blot analysis in HeLa cell line lysates (35ug/lane). This demonstrates the CDA antibody detected the CDA protein (arrow).