

## Product datasheet for **TA324913S**

### **MOX1 (MEOX1) Rabbit Polyclonal Antibody**

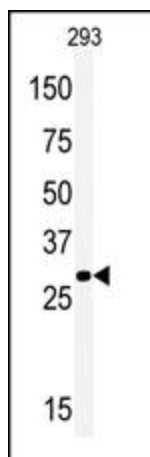
#### **Product data:**

Product Type:	Primary Antibodies
Applications:	IF, WB
Recommended Dilution:	WB: 1:1000, IF: 1:10~50
Reactivity:	Human
Host:	Rabbit
Isotype:	IgG
Clonality:	Polyclonal
Immunogen:	This MOX1 (Meox1) antibody is generated from rabbits immunized with a KLH conjugated synthetic peptide between 7-38 amino acids from the N-terminal region of human MOX1 (Meox1).
Formulation:	Purified polyclonal antibody supplied in PBS with 0.09% (W/V) sodium azide.
Concentration:	lot specific
Purification:	This antibody is purified through a protein A column, followed by peptide affinity purification.
Conjugation:	Unconjugated
Storage:	Store at -20°C as received.
Stability:	Stable for 12 months from date of receipt.
Predicted Protein Size:	27997 Da
Gene Name:	mesenchyme homeobox 1
Database Link:	<a href="#">NP_001035091</a> <a href="#">Entrez Gene 4222 Human P50221</a>
Synonyms:	KFS2; MOX1
Protein Families:	Transcription Factors

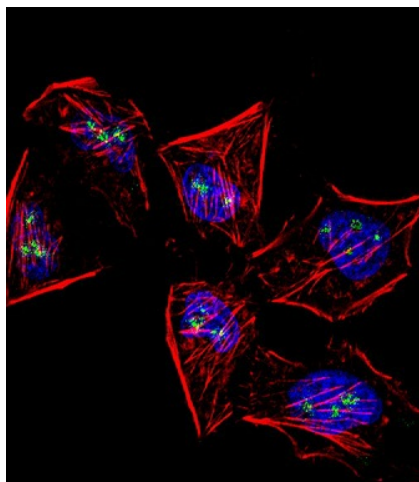


[View online »](#)

## Product images:



Western blot analysis of anti-Meox1 Antibody (N-term) (Cat. #TA324913) in 293 cell line lysates (35ug/lane). Meox1 (arrow) was detected using the purified Pab.



IF image of HeLa cells stained with Meox1 (Human N-term) (Cat#TA324913). HeLa cells were incubated with Meox1 primary antibody (1:25, 1 h at 37°C). For secondary antibody, Alexa Fluor® 488 conjugated donkey anti-rabbit antibody (green) was used (1:400). Cytoplasmic actin was counterstained with Alexa Fluor® 555 (red) conjugated Phalloidin (7 units/ml). Nuclei were counterstained with DAPI (blue). Meox1 immunoreactivity is localized to Nucleolus significantly.