

Product datasheet for **TA324913**

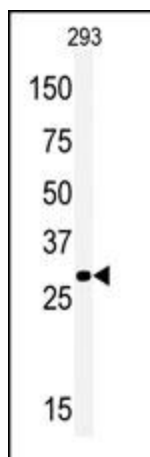
MOX1 (MEOX1) Rabbit Polyclonal Antibody

Product data:

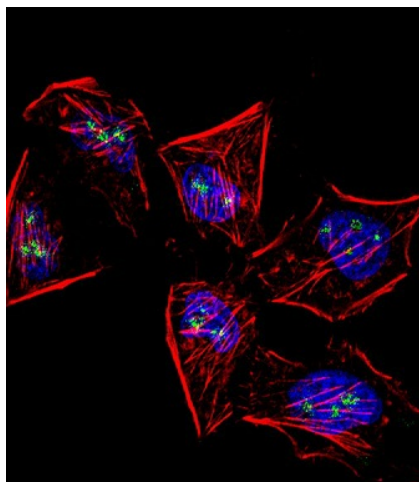
| | |
|--------------------------------|-----------------------------------------------------------------------------------------------------------------------------------------------------------------------------------|
| Product Type: | Primary Antibodies |
| Applications: | IF, WB |
| Recommended Dilution: | WB: 1:1000, IF: 1:10~50 |
| Reactivity: | Human |
| Host: | Rabbit |
| Isotype: | IgG |
| Clonality: | Polyclonal |
| Immunogen: | This MOX1 (Meox1) antibody is generated from rabbits immunized with a KLH conjugated synthetic peptide between 7-38 amino acids from the N-terminal region of human MOX1 (Meox1). |
| Formulation: | Purified polyclonal antibody supplied in PBS with 0.09% (W/V) sodium azide. |
| Concentration: | lot specific |
| Purification: | This antibody is purified through a protein A column, followed by peptide affinity purification. |
| Conjugation: | Unconjugated |
| Storage: | Store at -20°C as received. |
| Stability: | Stable for 12 months from date of receipt. |
| Predicted Protein Size: | 27997 Da |
| Gene Name: | mesenchyme homeobox 1 |
| Database Link: | NP_001035091 Entrez Gene 4222 Human P50221 |
| Synonyms: | KFS2; MOX1 |
| Protein Families: | Transcription Factors |



[View online »](#)

Product images:

Western blot analysis of anti-Meox1 Antibody (N-term) (Cat. #TA324913) in 293 cell line lysates (35ug/lane). Meox1 (arrow) was detected using the purified Pab.



IF image of HeLa cell stained with Meox1 (Human N-term) (Cat#TA324913). HeLa cells were incubated with Meox1 primary antibody (1:25, 1 h at 37°C). For secondary antibody, Alexa Fluor® 488 conjugated donkey anti-rabbit antibody (green) was used (1:400). Cytoplasmic actin was counterstained with Alexa Fluor® 555 (red) conjugated Phalloidin (7 units/ml). Nuclei were counterstained with DAPI (blue). Meox1 immunoreactivity is localized to Nucleolus significantly.