

Product datasheet for **TA324909S**

SPHK1 Rabbit Polyclonal Antibody

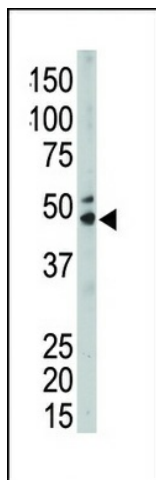
Product data:

Product Type:	Primary Antibodies
Applications:	IHC, WB
Recommended Dilution:	WB: 1:1000, IHC: 1:50~100
Reactivity:	Human, Mouse, Rat, Monkey
Host:	Rabbit
Isotype:	IgG
Clonality:	Polyclonal
Immunogen:	This SPHK1 antibody is generated from rabbits immunized with a KLH conjugated synthetic peptide between 286-315 amino acids from the Central region of human SPHK1.
Formulation:	Purified polyclonal antibody supplied in PBS with 0.09% (W/V) sodium azide.
Concentration:	lot specific
Purification:	This antibody is prepared by Saturated Ammonium Sulfate (SAS) precipitation followed by dialysis against PBS.
Conjugation:	Unconjugated
Storage:	Store at -20°C as received.
Stability:	Stable for 12 months from date of receipt.
Predicted Protein Size:	42518 Da
Gene Name:	sphingosine kinase 1
Database Link:	NP_892010 Entrez Gene 20698 Mouse Entrez Gene 170897 Rat Entrez Gene 710441 Monkey Entrez Gene 8877 Human Q9NVA1
Synonyms:	SPHK
Protein Families:	Druggable Genome
Protein Pathways:	Calcium signaling pathway, Fc gamma R-mediated phagocytosis, Metabolic pathways, Sphingolipid metabolism, VEGF signaling pathway

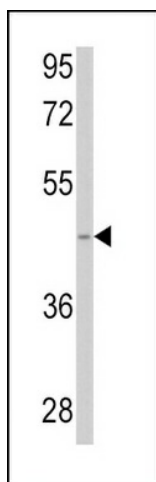


[View online »](#)

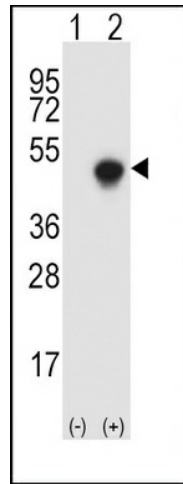
Product images:



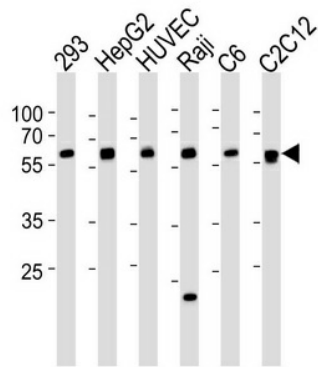
The anti-SPHK1 Pab (Cat. #[TA324909]) is used in Western blot to detect SPHK1 in mouse kidney tissue lysate.



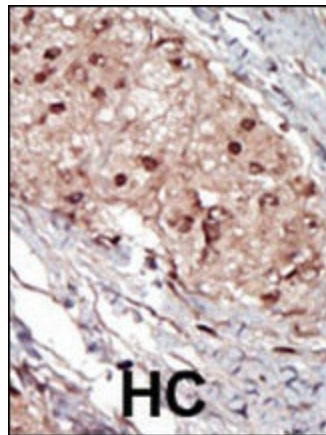
Western blot analysis of anti-SPHK1 Antibody (Center) (Cat.#[TA324909]) in 293 cell line lysates (35ug/lane). SPHK1 (arrow) was detected using the purified Pab.



Western blot analysis of SPHK1 (arrow) using rabbit polyclonal SPHK1 Antibody (R301) (Cat.# [TA324909]). 293 cell lysates (2 ug/lane) either nontransfected (Lane 1) or transiently transfected (Lane 2) with the SPHK1 gene.



Western blot analysis of lysates from 293, HepG2, HUVEC, Raji, rat C6, mouse C2C12 cell line (from left to right), using SPHK1 Antibody (R301) (Cat. # [TA324909]). [TA324909] was diluted at 1:1000 at each lane. A goat anti-rabbit IgG H&L (HRP) at 1:5000 dilution was used as the secondary antibody. Lysates at 35ug per lane.



Formalin-fixed and paraffin-embedded human cancer tissue reacted with the primary antibody, which was peroxidase-conjugated to the secondary antibody, followed by AEC staining. This data demonstrates the use of this antibody for immunohistochemistry; clinical relevance has not been evaluated. BC = breast carcinoma; HC = hepatocarcinoma.