

## Product datasheet for **TA324905S**

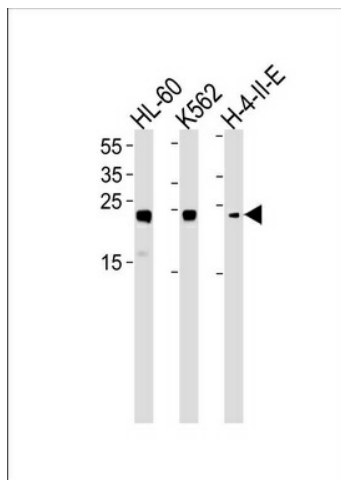
### HMGB2 Rabbit Polyclonal Antibody

#### Product data:

Product Type:	Primary Antibodies
Applications:	WB
Recommended Dilution:	WB: 1:1000
Reactivity:	Human (Predicted: Rat, Bovine, Pig)
Host:	Rabbit
Isotype:	IgG
Clonality:	Polyclonal
Immunogen:	This HMGB2 antibody is generated from rabbits immunized with a KLH conjugated synthetic peptide between 92-118 amino acids from the Central region of human HMGB2.
Formulation:	Purified polyclonal antibody supplied in PBS with 0.09% (W/V) sodium azide.
Concentration:	lot specific
Purification:	This antibody is prepared by Saturated Ammonium Sulfate (SAS) precipitation followed by dialysis against PBS.
Conjugation:	Unconjugated
Storage:	Store at -20°C as received.
Stability:	Stable for 12 months from date of receipt.
Predicted Protein Size:	24034 Da
Gene Name:	high mobility group box 2
Database Link:	<a href="#">NP_001124160</a> <a href="#">Entrez Gene 29395 Rat</a> <a href="#">Entrez Gene 3148 Human</a> <a href="#">P26583</a>
Synonyms:	HMG2
Protein Families:	Druggable Genome, Transcription Factors

[View online »](#)

## Product images:



HMGB2 Antibody (Center) (Cat. #TA324905S)  
western blot analysis in HL-60, K562, H-4-II-E cell  
line lysates (35ug/lane). This demonstrates the  
HMGB2 antibody detected the HMGB2 protein  
(arrow).