

Product datasheet for **TA324904S**

ELF4 Rabbit Polyclonal Antibody

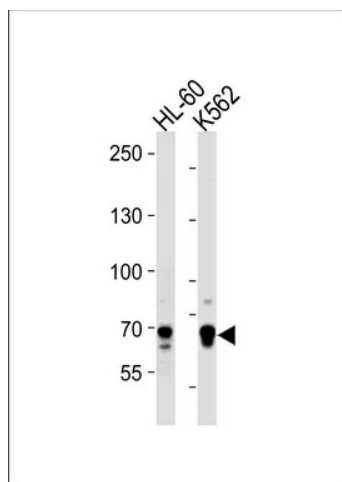
Product data:

Product Type:	Primary Antibodies
Applications:	FC, WB
Recommended Dilution:	WB: 1:1000, FC: 1:10~50
Reactivity:	Human (Predicted: Mouse, Bovine)
Host:	Rabbit
Isotype:	IgG
Clonality:	Polyclonal
Immunogen:	This ELF4 antibody is generated from rabbits immunized with a KLH conjugated synthetic peptide between 211-237 amino acids from the Central region of human ELF4.
Formulation:	Purified polyclonal antibody supplied in PBS with 0.09% (W/V) sodium azide.
Concentration:	lot specific
Purification:	This antibody is prepared by Saturated Ammonium Sulfate (SAS) precipitation followed by dialysis against PBS.
Conjugation:	Unconjugated
Storage:	Store at -20°C as received.
Stability:	Stable for 12 months from date of receipt.
Predicted Protein Size:	70730 Da
Gene Name:	E74 like ETS transcription factor 4
Database Link:	NP_001120669 Entrez Gene 56501 Mouse Entrez Gene 2000 Human Q99607
Synonyms:	ELFR; MEF
Protein Families:	Transcription Factors

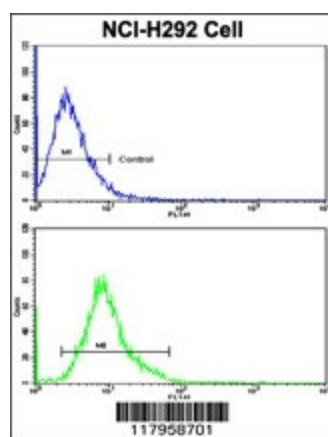


[View online »](#)

Product images:



ELF4 Antibody (Center) (Cat. #[TA324904]) western blot analysis in HL-60, K562 cell line lysates (35ug/lane). This demonstrates the ELF4 antibody detected the ELF4 protein (arrow).



Flow cytometric analysis of NCI-H292 cells using ELF4 Antibody (Center) (bottom histogram) compared to a negative control cell (top histogram). FITC-conjugated goat-anti-rabbit secondary antibodies were used for the analysis.