

## Product datasheet for **TA324903S**

### Cathepsin D (CTSD) Mouse Monoclonal Antibody [Clone ID: 892CT11.1.1]

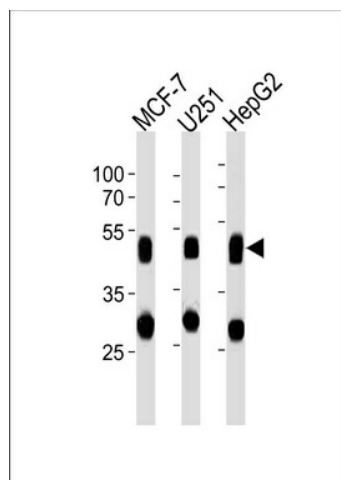
#### Product data:

Product Type:	Primary Antibodies
Clone Name:	892CT11.1.1
Applications:	WB
Recommended Dilution:	WB: 1:1000
Reactivity:	Human
Host:	Mouse
Isotype:	IgG1
Clonality:	Monoclonal
Immunogen:	Purified His-tagged CTSD protein was used to produced this monoclonal antibody.
Formulation:	Purified monoclonal antibody supplied in PBS with 0.09% (W/V) sodium azide.
Concentration:	lot specific
Purification:	This antibody is purified through a protein G column, followed by dialysis against PBS.
Conjugation:	Unconjugated
Storage:	Store at -20°C as received.
Stability:	Stable for 12 months from date of receipt.
Predicted Protein Size:	44552 Da
Gene Name:	cathepsin D
Database Link:	<a href="#">NP_001900</a> <a href="#">Entrez Gene 1509 Human</a> <a href="#">P07339</a>
Synonyms:	CLN10; CPSD; HEL-S-130P
Protein Families:	Druggable Genome, Protease
Protein Pathways:	Lysosome



[View online »](#)

## Product images:



CTSD Antibody (Cat. #[TA324903]) western blot analysis in MCF-7, U251, HepG2 cell line lysates (35ug/lane). This demonstrates the CTSD antibody detected the CTSD protein (arrow).